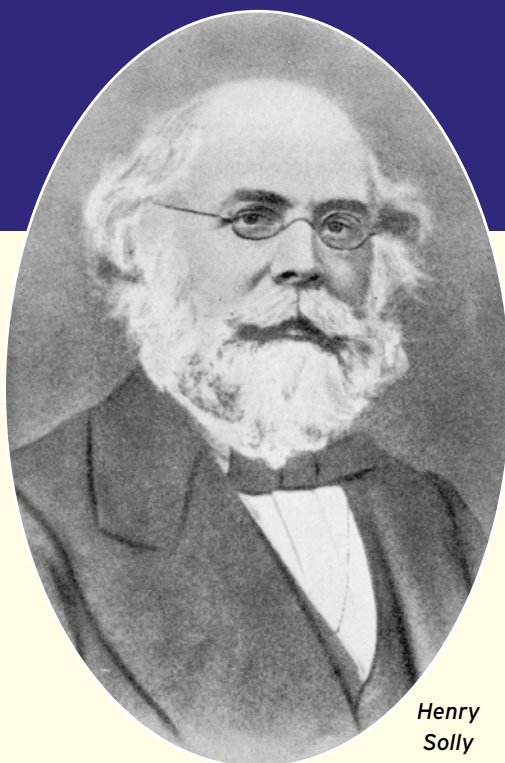


Club Journal

June 2012

The magazine for all CIU members

75p



Henry Solly

STILL FIGHTING FOR OUR CLUBS AFTER 150 YEARS

The CIU celebrates a remarkable milestone this month – its 150th anniversary.

It was on June 14, 1862 that a meeting was held in London presided over by the Lord Chancellor, Lord Brougham, that resulted in the formation of The Working Men's Club & Institute Union. The driving force behind the formation of the Union was a teetotal Unitarian Minister, the Rev. Henry Solly, who later that year became the Union's first General Secretary. He was determined to provide an alternative to the pub, a place for working men to chat with one another and be with friends, in a relaxed or happy atmosphere with or without refreshments.

Solly had set out in 1861 with the aim of raising the fantastic sum of £3 million – a skilled wage was about £1 a week so this represents more than a billion pounds today – and he did secure a donation of £50 from Queen Victoria and, later, another one of £25 from the Prince of Wales, later Edward VII.

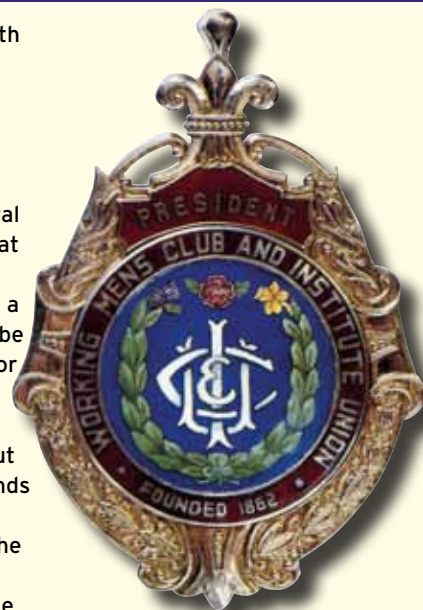
This issue of Club Journal includes a special 12-page supplement, written by Dr Ruth Cherrington, the founder of the clubhistorians website, which among other things, reveals that at one point there were four dukes and nine earls among the Union's Vice-Presidents.

The Union still has strong support in Parliament for its many campaigns on behalf of the clubs, thanks to the All-Party Parliamentary Group for Non-Profit Making Clubs and a special reception to mark the anniversary will be held at the House of Commons on July 11, hosted by Lord Bilston, formerly Dennis Turner MP.

Twenty Union Branches have already celebrated their centenary and last month Cleveland became the 21st when it marked its centenary with a special event at

If I hadn't cut my teeth in the working men's clubs for 15 years I wouldn't be where I am today. I often call my time working the clubs as the working class RADA. Once you have established yourself as a credible club act, you can work anywhere. I speak for many in our profession when I say I am extremely grateful for the fabulous years learning my craft. Long may the CIU continue.
Warmest regards,

Jane McDonald.



The President's Jewel, which adorns the chain worn by the Union President at the Annual Meeting

Saltburn House, attended by Union President George Dawson, which will be covered in next month's issue.

Arguably the biggest impact the CIU has had on the nation has been in the field of entertainment and the Union has received many letters of congratulation from, among others, Jane McDonald, Les Dennis and Jimmy Cricket, who are all grateful for the opportunities that the clubs gave them. We plan to publish some more of their messages of congratulation in forthcoming issues.

INSIDE ...

Queenie passes on

The Union's oldest member, Queenie Schofield, who once refused to let former General Secretary Kevin Smyth into Colchester Belle Vue Social Club, has died at the age of 106.

Full story – Page 21

Club members and bar staff, who appeared in a nude calendar for charity, have handed over cheques for more than £1,500.

Full story – Page 3.

The Glorious Past and Challenging Future: 150 years of the CIU, by Ruth Cherrington – Pages 9-20.



150 year anniversary



They won't forget Ernie!

West Midland Branch have thanked retiring President Ernie Nicks with a special dinner to mark his 28 years' service to the clubs and the Branch, which has included 12 years as Branch President.

Ernie, his wife Eunice, new President Des Flood, Branch Secretary Geoff Whewell, Office Administrator Mary Johnson and Branch Executive members John Hope, Tony Bartram, John Clarke and Alan Goodwin, were among those welcomed to a dinner by the new Branch Vice-President, Jack Haughey.

Des Flood thanked Ernie for the help and advice he had given to so many clubs and the excellent standards he had set, which were now the hallmark of the branch. He also expressed his gratitude to Ernie for his personal support and guidance and wished him and Eunice good health in the coming years. He presented Ernie with a crystal glass bowl and a cheque from the Branch, while Mary Johnson presented Eunice with a bouquet.

Ernie, in his reply, noted the work carried out by his colleagues in assisting clubs through some difficult years and hoped his guidance would be carried forward in the challenging times ahead.



Pictured (left to right) are Coun. John Lines, Weoley Castle Vice-President David Jones, Des Flood, Geoff Whewell and Club Secretary Dave Morley.

Branch honours its retiring President

Des Flood, Geoff Whewell, Tony Bartram and Alan Goodwin also visited Weoley Castle WMC and joined them and City Councillor John Lines to celebrate the club's 60th anniversary

The evening entertainment was provided by Roy Orbison and Elvis Presley tribute acts, whose vocal portrayals

of the late stars received rapturous applause. The function was well supported by the club's members, who have supported the club through the years and made it one of the finest in the Midlands.



Des Flood presents Ernie with a crystal glass bowl and a cheque from the Branch.

Proud and Honoured



Committee members Jim Bell and Jim Watson were rewarded for their service to Ryton Social Club near Gateshead when Durham Branch Secretary Brian Young presented a Long Service Award to Jim Bell and a Certificate of Merit to Jim Watson.

Pictured (left to right) are: Chairman John Burdis, Branch Executive member Jimmy Young, Jim Bell, Jim Watson, Brian Young and Club Secretary Ken Gascoigne.

Behind them is the function room's striking mural, which shows a local country scene and is much admired.



Doncaster Branch President Alan Baker visited Carcroft Village Club and presented a Certificate of Merit to Committee member John Murray. Pictured (left to right) are Branch Executive member Derek Wallace, Alan Baker, John Murray and Club Secretary John Oldroyd.

HAYES WORKING MEN'S CLUB LATE NIGHT CABARET

June 30th

'Q BAND' (BEE GEES TRIBUTE)
'SHENTON DIXON' AS STEVIE WONDER
'BOB JAMES' SOLO SINGER
COMPERE 'TERRI GAUCI'

September 29th

'THE PIGGIES' (60s TRIBUTE BAND)
PLUS SUPPORT

October 27th

'BROTHERS OF SOUL'
(TEMPTATIONS AND MOTOWN TRIBUTE)
PLUS SUPPORT

November 24th

'RATS IN THE KITCHEN' (UB40 TRIBUTE)
PLUS SUPPORT

**PUMP LANE, HAYES, MIDDLESEX UB3 3NB
SHOW £10 PER TICKET
(OVER 18 ONLY)**

Bar open until 1.00 am - Doors open 7.00 pm

**Coach parties welcome by prior
arrangement - please contact Secretary
for information and tickets on:
020-8573-1721**

Cheeky calendar raises a few laughs – and £1,500



Club has its deeds

Blackpool Royal British Legion Club had cause for celebration when the deeds for their property were finally received.

Vice-President Jack Swann is pictured with the deeds at a special celebration held in the Club to commemorate this landmark. Jack is the only serving member of the Committee who was involved in the planning and original loan from the Federation Brewery 30 years ago for the purchase of the property in King Street, Blackpool.



Committee, members and staff at Rushden Athletic Club have raised more than £1,500 with their cheeky charity calendar. As we reported in December Club Vice-President Jo Cusworth even gained sponsorship from Northamptonshire Police for the calendar, which featured props and locations supplied by local organisations and businesses including a butcher's, pizza

restaurant and greengrocer's.

Half of the money raised went to local children's charity FAIR, whose deputy manager Chrissy Aldwinckle also took part, with the other half going to Cancer Research.

Pictured (front row, left to right) are: Vinnie Gray (Mr May); Danni Francis (Miss May) Theresa Buckley Brown (Miss June); Chrissy Aldwinckle (Miss September); Jo Cusworth (Miss April); Club President Trevor Brown (Mr June); and barmaids Charlene Chapman and Emma Eady (Miss Decembers). Back row: Main sponsor Lisa Pickering from Heineken UK (centre) with (left to right) Committee members Mark Law (Mr May) Ross Abbott (Mr March) Lea Hunt and Sarah Maynard (Miss Decembers).

A representative from Cancer Research was unfortunately unable to make the presentation night but they also received a cheque for the same amount £758.75, making a total of £1,517.50.

Member's public thank you

A club barmaid has been singled out for her kindness to a disabled club member in a local paper.

Raymond Kully was so impressed by the service from barmaid Donna Hutchinson at the Osborne Club in Chester-le-Street that he wrote to the local Newcastle Journal. He said: "I was suffering really badly and Donna saw me limping. She

gave me table service for the rest of the day.

"The club has notices stating that disabled people should ask the staff for assistance but Donna really practises this policy. I only wish there was some award for which I could enter Donna. This letters page seems to be the only way I can thank her for her kindness and help."

A heart-felt effort

A South London club has raised £1,500 to thank a hospital for saving the life of a member's granddaughter.

Eltham Hill WMC in Kent Branch collected the money to help the Evelina Children's Hospital, which has cared for Committee member Ray Smeeth's six-year-old granddaughter Mia.

Mia was diagnosed with congenital heart disease when she was nine weeks old. She had two holes in her heart and aortic coarctation, a narrowing of the major artery that sometimes happens at birth.

She has since had two further operations at the Evelina – part of the world famous Guy's and St Thomas' Hospitals – but the good news is that the day before the concert she was given the all-clear meaning she doesn't have to go back for six months.

The club raised the money with a charity evening at which singer Shane Ring and his wife barmaid Lisa Ring donated their fee and wage for the night. Mia and her sister Molly are pictured with (left to right) their mum Kerry, Lisa and Shane Ring and dad Martin



Quiz teams hit their targets

Leatherhead & District Social Club saw a new record score set in this year's CIU National Quiz.

Ashford Road Club from Swindon were missing regular team captain Tim Westcott but became South East champions and won £160 in cash from sponsors Dransfield by only answering one question wrong all night: What have the Royal Albert Hall and the Royal Festival Hall in London got in common with the Usher Hall in Edinburgh, the Harrogate International Centre and the National Indoor Arena in Birmingham?

They scored 67 out of 70 as they also dropped two points in the list round where for half a point each teams were asked to come up with as many names as they could for the one woman and nine men (apart from regular Alan Davies) "all of them purporting to be comedians" to have made more than 10 guest appearances on the TV show QI – which like the CIU Quiz prefers interesting answers and thought processes to merely remembering things.



Joining the Ashford Road team in the national final at Derby will be two Surrey teams, New Haw Club and the Ashted Village Club A

team. Ashted had six players on the night and decided to split their two teams into an A team of four and a B team of two. The strategy worked as the A team of Barry Channell, Doug Robinson, Sue Clark and John Heasman won £60 by finishing third, while the B team of Allison Nicholls and Heather Robinson won £20 by finishing second last – much to their delight.

The home club won £40 for the TV & Films round and Club Secretary John Brimelow, who is 5ft 7in, won a spot prize provided by co-sponsors The Co-op Bank, while the two-man team of Stuart Solomons and Ray Roberts from Eltham Hill Club in South London won the £40 sports round prize.

Other heats have been arranged as follows:

- MIDLANDS: Ansty WMC, Coventry; 1pm, Sunday, June 24;
- WALES & WEST: Bettws Social, Newport; 8pm Monday, June 25;
- NORTH EAST: Lemington Social, Newcastle; 8pm, Thursday, July 26;
- NATIONAL FINAL: Alvaston & Crewton Social, Derby; 1pm, Sunday, September 2.

Some of these heats may have space for late entries. For further information ring Chris Brewis on 0191 2650040 or email cj@powdene.com.

• Those halls in London, Edinburgh, Harrogate and Birmingham have all staged the Eurovision Song Contest, which this year, of course, featured former club singer Engelbert Humperdinck.



ON TARGET: Allison Nicholls and Heather Robinson receive their consolation prize cheque of £20 from Colin Clements and Barry Knowles of sponsors Dransfields in front of the Leatherhead Social Club dart board. Below: Colin Clements and Barry Knowles with South East champions Eric Kilby, Kevin Ashman, Keith Andrew and Brian Wilkins.



List Answers

1. Jo Brand
 2. Sean Lock
 3. Phill Jupitus
 4. Bill Bailey
 5. Rich Hall
 6. Jimmy Carr
 7. David Mitchell
 8. Clive Anderson
 9. Rob Brydon
 10. Dara O'Briain
- The ten most common guests on QI are: (Answers can be in any order)

COMPUTER AIDED DESIGN

FULL INTERIOR REFURBISHMENT

call: 020 8541 4471

BARS | CARPETS | FURNITURE

www.easeco.co.uk

47-51 Hawks Road, Kingston upon Thames, KT1 3DS

contact@easeco.co.uk

NATIONAL ACCOUNT SUPPLIERS LIST

Here is a list of the current Union-recommended suppliers/
National Account holders:

Access2All

(H&S/Disabled access advice)
Mick Rickwood:
07862162276/01912092906.
michael@access2all.co.uk

Auditel (utility consultant)

Giles Branson: 07947039382.
Giles.Branson@auditel.co.uk

Aon (Club Insurance Services)

Andy Kitchener: 07989984260.
andrew.kitchener@aon.co.uk
Stuart Hall: 07983576565.
stuart.hall@aon.co.uk
Gareth Butler: 07779702240.
gareth.butler@aon.co.uk

Bissett Kenning & Newiss (rating advisors)

Cathrine Moore: 0191272
5551.
Cathrine.moore@bissett-
kenning.co.uk

BOC Sureserve (gas)

Richard Nixon: 07768193174.
Richard.nixon@boc.com

Co-operative Bank

Paul Davies: 07803212331.
Paul.davies@cfs.coop

Cellarbright (line cleaning)

Hance McGhie: 07740367029.
hmcghie@cellarbright.co.uk

Coventry Silvercraft (trophies etc).

Marie/Andy Oakley:
02476223374.
andy@coventry-silvercraft.
co.uk

Dransfields

(gaming machines/lottery
machines and tickets)
Alan Jackson: 01132 444 555.
Alan.jackson@dransfieldsltd.
co.uk

Envtec Services Limited

Phil Towndrow 01455 821177
philt@envtecservices.co.uk

Heineken UK

Peter Usher: 07831840330.
peter.usher@heineken.co.uk

Thompson & Bryan

(loss assessors and valuers)
Derek Lamb: 0121 428 4000

Walkers Snacks

(crisps and soft drinks)
Angie Sparling: 07740640425.
Angie.sparling@pepsico.com



DON'T SKIMP ON DISPENSE GAS

BOC SURESERVE are long-standing approved suppliers and partners of the CIU. As part of their commitment to the CIU, they provide help and advice to clubs on all aspects of dispense gases and legislation. Recently there has been an upsurge in activities of illicit suppliers who cut corners on dispense gas quality to enable them to undercut reputable suppliers. This is confirmed by a report from the Health & Safety Executive highlighting an increasing trend in the number of incidents involving beverage gas cylinders. The possible consequence of purchasing dispense gases from these suppliers is dire. Many people purchase dispense gas as a commodity only concerned with price, yet they cannot define what is in the cylinder or the interior condition of the cylinder itself. Poor quality cylinders, gas or gas mixtures can significantly affect the quality of the drinks being dispensed and can be a serious health hazard.

The Facts

- Do not assume "gas is gas"
- Universal gas and cylinder quality is a myth
- Only experts know what is in a cylinder and the condition of its interior
- Rust on the interior of a cylinder can lead to a metallic

flavour as well as beer haze and product waste

- Dispense gases are a relatively low cost item, however they can significantly affect trade and profitability
- Mixed gas cylinders are filled to 200 times atmospheric pressure. If not regularly tested interior corrosion could lead to a cylinder rupture with serious consequences.

Remember

- Poor gas can cause fobbing. You'll end up throwing more beer away than you'll save on cut price dispense gases
- The presentation, head, taste, mouth feel, brightness and clarity of beer depend on gas quality
- People drink with their eyes before a beer even touches their lips. The first few sips will decide whether they order another.
- Any more than the smallest amount of oxygen in the keg will sour the beer

INFORMATION

If you would like free advice and guidance on any dispense gas issue, please contact the CIU's only approved dispense gas supplier:
BOC Sureserve. Tel: 08457 302302 www.bocsureserve.co.uk
Or contact Richard Nixon on 07768 193174.

No half measures.



Insurance for CIU clubs

Our new specialist insurance for CIU clubs includes a number of updated risk assessment tools. These are designed to help you reduce the risk of a claim, and avoid yearly premium increases.

To make the most of these tools, our experienced Client Managers are on hand to ensure you get the policy that best suits your needs.

Speak to one of our Client Managers today

0845 287 2539

licensedtrades.aon.co.uk



Your Club. Your Insurance

Copyright © 2014 AON plc. All rights reserved. AON plc is a registered provider of insurance services in the UK. AON plc is a member of AON Group Limited, a company registered in the United Kingdom. AON Group Limited is a member of AON Group, a company registered in the United States of America. AON Group is a member of AON Group, a company registered in the United States of America. AON Group is a member of AON Group, a company registered in the United States of America. AON Group is a member of AON Group, a company registered in the United States of America. AON Group is a member of AON Group, a company registered in the United States of America.

Keep the drinks flowing



Rely on the experts

Our local experts keep your business - and your drinks - running smoothly. Gas management has never been so simple, hassle-free and reliable.

- Pre-planned deliveries and stock management.
- Cylinders connected and empties removed to cut down handling.
- Expert advice and support for worry-free drinks dispense.
- Rapid emergency delivery so you never run out.
- Cellar safety assessments, CO₂ alarm installations and gas safety training.
- Round the clock help and support.

For advice 24/7 call:

08457 302 302

www.BCOnline.co.uk



Machine games duty begins in February

Machine Games Duty (MGD) is a new tax on gaming machines which, subject to the relevant provisions in the Finance Bill 2012 receiving Royal Assent, (expected July 2012) will start on 1st February 2013. MGD will tax the net takings from "machine games" – games played on a machine for a cash prize where any prize the machine offers is greater than the cost to play.

For clubs this means that machines of present Category B4 (maximum stake/prize £1/£250) and Category C (maximum stake/prize £1/£70) will be liable to MGD; and so will skill machines if they offer any prize higher than the cost to play. Category B3A and pull tab lottery machines will be exempt from MGD and VAT.

2. MGD RATES: MGD is charged on net takings. This means the amount players pay to play minus what is paid out as winnings. The Standard Rate is 20% and will apply to the vast majority of club machines; (there is a lower rate of 5% but this only applies to machines with a maximum stake/prize level of 10 pence/£8 (present AMLD Category "D").

3. TRANSITION: Amusement Machine Licence Duty (AML) will continue until 31st January 2013. Current VAT arrangements on machines will also continue to that date after which machine takings liable to MGD will become exempt from VAT. As clubs' licences become due for renewal in the remaining period to 31st January 2013, HMRC will advise licensees of the arrangements for licensing their machines up to that date.

By Norman Pritchard-Woollett
ADMINISTRATIVE CONSULTANT



4. REGISTRATION FOR MGD: Clubs with a club gaming or club machine permit intending to continue operating liable machines after the 1st February 2013 will be required to register with HMRC, starting late 2012, and so will become responsible for accounting for and paying MGD. Standard accounting periods will be for three calendar months and MGD returns and payment will have to be made within 30 days after the end of each accounting period. Clubs will have to keep records to substantiate their MGD returns and the amounts declared for payment.

5. VAT: As stated above VAT will not be payable on machines liable to MGD from 1st February 2013. The overwhelming majority of CIU clubs will already be partially exempt because they make both VATable supplies (eg alcohol) and exempt supplies (eg sale of bingo and lottery tickets). The switch from taxable to the exempt status of machine takings will need to be taken into account.

A basic principle of VAT is that input tax relating to exempt outputs (eg VAT on lottery tickets and (from 1st February 2013) VAT on machine-hire charges is not normally recoverable. However, many clubs (the Union hopes the majority) are nevertheless able to recover all of their input VAT because their total input tax is what is known as "de minimis".

Your financial advisors will be familiar with the partial exemption and de minimis rules

The Union is hopeful that the great majority of CIU clubs will continue to benefit from de minimis rules, and the abolition of AMLD will be beneficial in that clubs will avoid having to pay large AMLD licence fees up front and will only pay MGD commensurate with the profitability of their machines.

6 HMRC/TRADE WORKING GROUP:

The CIU continues as a member of this working group convened by HMRC to work with machine suppliers and users to facilitate the transition from AMLD to MGD.

• The above is a brief explanation only for general guidance. The full rules, procedures and tests to be satisfied for full recovery of input VAT are set out in VAT Notice 706 (Partial Exemption).

FSA returns

There is a legal requirement, which the FSA are unable to waive, for clubs to submit annual returns each year. They have introduced a new procedure if a club does not submit annual returns.

If a club fails to submit its returns, it lays itself open to prosecution, which can result in a fine and/or cancellation of its registration. If no returns are submitted, enforcements may prosecute in court, if returns are still not forthcoming, a club's registration could be cancelled.

The FSA have confirmed that under the Friendly Societies Act and the Industrial & Provident Societies Act, there is no provision to resurrect a club registration, once cancelled. Any new application will no doubt be refused by the FSA

It is therefore imperative for clubs to register annual returns each year to the FSA.

Maureen Ross
Head of Rules Dept.

The co-operative bank
good with money

We're right on cue when it comes to cash

Our Business Current Account – Cash Tariff offers competitive rates plus the convenience of paying in cash at the Post Office®.

To find out more
0800 0282 282
co-operativebank.co.uk/business

Lines open
8.30am to 5pm
Mon to Fri
ref: 39502



ANDREW DANE,
our employment
law expert,
would welcome
your questions,
which should be
addressed to
The Editor,
Club Journal,
CIU,
253-254
Upper Street,
London N1 1RY
or emailed to
cj@powdene.com

The Co-operative Bank is authorised and regulated by the Financial Services Authority (No. 121885), subscribes to the Lending Code and the Financial Ombudsman Service and is licensed by the Office of Fair Trading (No. 006110). The Co-operative Bank p.l.c., P.O. Box 101, 1 Balloon Street, Manchester M60 4EP Registered in England and Wales No. 990937. Calls may be monitored or recorded for security and training purposes. For BT customers, calls to 0800 numbers are free. Call charges from other providers may vary and you may wish to check this with your service provider.

Debate continues over Blackpool

Dear Sir,

I have been instructed by the Committee to write to the Union with regard to a physical assault on one of the club's delegates at the Blackpool conference.

Pittshill Victory sent three delegates, two of whom were ladies who had never attended the Conference before. Following the vote with regard to the Chairman it was clear from the shouting that there was a contingent from one of the clubs in Durham Branch sitting several rows behind us.

Following the disgraceful scenes, which I am sure you have already had complaints about, one of the ladies, Mrs Mandy Roberts, received a blow on the back of her head from a plastic water bottle thrown from behind. We are deeply concerned that she may have been targeted because of the way she voted, particularly as I have had other clubs express their feeling of intimidation when voting against the motion.

Mrs Roberts kept quiet about the attack until after the conference because she was aware that her brother was seated in front of her. He was the delegate and Vice-

President of the North Staffs Branch and is an ex-

serviceman. He would almost certainly have gone after the perpetrator of that cowardly attack upon his sister had he known about it.

When any organisation invites delegates to a venue it owes a duty of care to ensure their safety. Patently this was not the case at this year's Conference. Former President Derek Dormer's famous boast that we are the only organisation that does not need stewards for our conference now seems somewhat out of date.

The club looks forward to the Executive's comments about what action it will be taking and how it will be protecting our delegates from attack at future AGMs.

Dan Capewell
Secretary
Pittshill Victory,
Stoke-on-Trent



THANK YOU

Former General Secretary Kevin Smyth (left) would like to take the opportunity to thank everyone who helped him during the recent weekend in Blackpool and to say how grateful he is.

Kevin continues to make progress following the stroke he suffered two years ago.

DRINKERS WILL BE NEXT

Dear Sir

After reading *Club Journal* I felt very confident in the Executive's plan to challenge MPs in Westminster to reverse some policies that are damaging our clubs.

But the statement by Health Secretary Andrew Lansley that tobacco companies should have no business in the UK, is frightening to say the least. We will not be able to legally buy tobacco products or legally smoke anywhere in public or in our cars and homes – and

income tax and VAT will have to be increased to raise the £10 billion paid by smokers every year.

Now, more than ever, is the time to contact your MP to stop this government creating the biggest peacetime civil unrest this country has ever known. There was never a sustained public outcry about the smoking ban and some clubs thought they could "ride it out"; this is the price we have paid for our silence.

The Health Secretary has made the Government's position crystal clear and there will be no more opportunities to fight back, it's now or never because next on the hit list is alcohol.

Sean Spillane
High Town Club,
Luton



Durham accepts rules

Dear Sir,

In reply to Bob Daybell's letter (*Club Journal*, May), which stated that the Durham Branch had no interest in the democratic process, I would like to remind him that if the National Executive had followed the rules and called a Special Meeting enabling all the clubs the chance to attend, the incident at the conference would never have occurred. The full facts could have been discussed and a decision taken on the future of Mr McGlasham at the meeting by the clubs that elected him in the first place.

As for his other comments regarding women and Pass Cards not all clubs in Durham were against this as numerous clubs in the Branch allowed lady members full access and Committee membership. If common sense had prevailed and it had been agreed clubs could admit women Pass Card holders if they wished to, (not individual Branches as it was proposed at one meeting) it would have happened years ago without the Equality Act or other legislation.

Regarding his other comments about decisions at the conference being decided by a postal vote, it was passed years ago to do away with this due to time and money and agreed clubs could mandate delegates to vote at the conference.

The question of holding the conference at different venues around the country has

also been discussed. It was decided that Blackpool, due to its central location and the availability and cost of accommodation and facilities, was the best place to have it.

On a personal note I think the Blackpool conference weekend brings a feeling of friendship and togetherness among all clubmen and women and, hopefully, issues and differences can be resolved so we can move forward in our Union.

John Franks
Chilton & Windlestone WMC
Co. Durham

At a recent hearing the date for the employment tribunals of Mick McGlasham and Maxine Murphy was put back to July. The case of Valda Edmunds, who is claiming constructive dismissal, is a sequential consolidation, which means the tribunal will be held later, in September, but the cases remain connected.

Club Journal
Official Journal of the CIU

253-254 Upper Street,
LONDON N1 1RY.
Telephone: 020 7226 0221
Fax: 020 7354 1847
Email: info@wmcu.org
Website: www.wmcu.org.uk
Personal subscriptions:
£7.50 per year
Editor: Ken Roberts

Editorial Office:
Powdene Publicity, Unit 17,
St Peter's Wharf,
NEWCASTLE NE6 1TZ.
Telephone: 0191 265 0040
Fax: 0191 275 2609
News:
Chris Brewis
Email: cj@powdene.com
Advertising:
Mike Lyon
Email: info@powdene.com
Tel: 0191 488 7142

A YEAR OF CELEBRATIONS



TEAMWORK: (L-R): President Stuart McHarg, Regional Manager for HEINEKEN in the UK David Gerrard and Secretary and Treasurer Brenda McMahon

As its 100th anniversary approaches and with the Queen's Diamond Jubilee just gone, Brafield-on-the-Green WMC near Northampton is enjoying a year of important celebrations.

With a membership of more than 360 aged from 18 to 93, there is something for everyone at the club, but 2012 is extra



WINNERS: Steward Brian Jones says John Smith's and Foster's are the club's best sellers

special, according to Secretary and Treasurer Brenda McMahon.

"Our members enjoy a wide range of activities including snooker, darts, bingo and live entertainment and we also have very strong Men's and Ladies skittles teams who play in local leagues after which we hold the presentations at the club.

"Our kitchen has been rated 5-star and caters from Thursday to Sunday for members' and outside organisations' functions. Our concert room is also used by the local football club, Good Neighbours Club for the elderly and Quiz Nights.

"Thanks to David Gerrard, our Heineken Regional Manager, members are also invited along to Tasting Sessions where he introduces us to new products. The result has been that brands such as the Jacques fruit cider range and Bulmers 17 are now particular favourites with many of our members.

"We have a very captive audience from the village but we also attract people from further



COMMUNITY: (back row, left to right): Jean Barber, President Stuart McHarg, Vice-President Derrick Fraiel, Trustee Graham Robinson, Secretary and Treasurer Brenda McMahon, Trustee Norman Roberts and (front row): Shelley Gantrey, Maureen Keane and Trustee Les Battison

afield and welcome holidaymakers from caravan parks during the camping season so we have to ensure enough is going on to keep them coming back and bringing their friends.

"David is very professional and accommodating and insists on seeing us on a regular basis to discuss sales and pricing, market trends and any forthcoming promotions which may be of interest to us. Any problems we may encounter are dealt with swiftly and efficiently as he is always just a phone call away.

"Last year David and HEINEKEN in the UK organised for our cellar to be moved so that we could create a downstairs Committee Room which has helped our older members enormously when it comes to attending meetings.



INFORMATION: Regional Manager David Gerrard insists on regular meetings to keep everyone up to date with business-building opportunities

"Over the Jubilee weekend we laid on a number of attractions aimed at all the family such as a street party, hog roast, fireworks and a senior citizens buffet and, as I am sure will be the case in December when we mark our 100th year as members of the CIU, David will support us in every way he can to ensure the celebrations are memorable for our entire membership.

"The Committee and I would strongly recommend that clubs considering a change of supplier should approach HEINEKEN in the UK as their knowledge and expertise in the club sector is second to none!"

David Gerrard, Regional Manager for HEINEKEN in the UK, says: "Brafield WMC is very active and gives its members a great choice of activities and entertainment

throughout the year and I look forward to playing my part in all its celebrations this year and in the future."

● **If you would like to find out more about the benefits your club could enjoy by trading with HEINEKEN in the UK or to arrange a meeting, please contact PETER USHER, Buying Group Director on 07831 840330 or email peter.usher@heineken.co.uk**



Committed to *your* club

Ring Peter Usher on 07831 840330



THE GLORIOUS PAST AND CHALLENGING FUTURE: 150 YEARS OF THE CIU

Introduction

When the very first working men's clubs opened in the middle of the 19th century, it wasn't at all certain they'd last more than a few months let alone be part of a movement that would span three centuries.

Some didn't survive very long at all while others prospered, including Walthamstow WMC in North London which, like the CIU, itself celebrates its 150th anniversary this year.



Members of Walthamstow WMC celebrate their 50th anniversary at a dinner in 1912.

Clubs and their founders were given a big boost and their chances of survival improved when the CIU – or to give it its full name, The Working Men's Club & Institute Union Ltd – was established in London in June 1862. It set out to help those clubs already in existence around the country and to encourage the opening of many more.

Its founder was a teetotal Unitarian minister, the Reverend Henry Solly, who thought working men and their families deserved something better than the pub in their leisure time. He wanted men to abandon drink and take up more healthy recreational pursuits.

His commitment to the cause gained many wealthy and aristocratic supporters. Even Queen Victoria and the Prince of Wales made donations and four dukes and nine earls were among the Union's early Vice-Presidents. Gradually, the CIU came to represent a national movement of clubs and set standards about what a "good" club should be like and offer.

There were some disagreements early on

about the best way ahead with many challenges to overcome including opposition from both the Temperance movement and publicans.

But, 150 years on, the CIU still exists along with more than 2,000 affiliated clubs. In that time it became arguably the largest working class volunteer organisation in the world for as we know, most clubs are run by people who give their time

By Dr. Ruth Cherrington
www.clubhistorians.co.uk

and skills for free. The CIU was doing the "Big Society" long before any modern day politician had invented the term!

Successful clubs built extensions or moved to bigger premises and all the time, new clubs were coming on the scene. "Clubland" extended its reach right across the UK. By the time of their post-war peak in the early 1970s, there were more than 4,000 clubs affiliated to the CIU with a staggering total of around six million members!

The CIU's sports and games competitions became a huge social enterprise, including most of its clubs. Millions of people put these at the centre of their recreational life, whether they indulged in billiards, darts, dominoes, angling or cribbage.

And where would we be without club entertainment? Collectively, the clubs represented the biggest live entertainment venue in the country and were a fantastic training ground for talent. Many of the faces we see on

TV and voices we hear on the radio owe much to

the clubs where they honed their talents and learned how to handle audiences who knew exactly what they liked and disliked!

From Dame Vera Lynn through Sir Tom Jones to the Stereophonics: all used CIU clubs in their early careers. Most will admit to it not being an easy way up but one that prepares you for anything in showbiz!

This year's British Eurovision entry was sung by Engelbert Humperdinck, who began his career in his local clubs in Leicester.

There are still educational elements to club life and charitable causes remain close to the heart of many club members, as we shall see. Someone somewhere is always doing something to raise money – whether shaving their heads or having fun runs. The amounts raised over 150 years have never been totalled but would run into many millions!

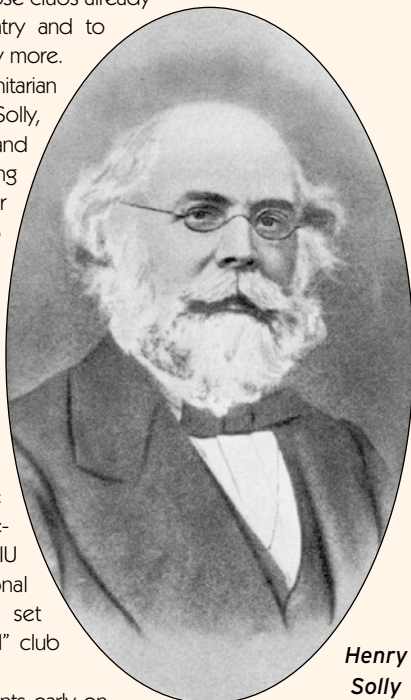
Far too many clubs have closed down in recent years and many are struggling to keep their doors open – there are indeed challenging times ahead.

But many clubs are thriving, providing both traditional activities and new facilities for their members and showing the way forward into the future.

The CIU has represented clubs and offered a collective voice for them, which is one of its key strengths. It pulls clubs together as a movement – the Union, as it is often described. We believe this strength, this united voice, will ensure there is a bright future for the CIU, its clubs and members all over the country.

This supplement is a celebration of 150 glorious years of the CIU and the club life that it fostered. It pays tribute to those enterprising men and women who helped to found and foster clubs across the generations and to all the millions of members who nurtured their clubs over their lifetimes.

Congratulations to the CIU and a Happy 150th Anniversary!



Henry Solly

A Bit of History - the beginnings of the WMCIU

When you walk into a CIU club, you are walking into a piece of living history that stretches across the country.

Why did the Reverend Henry Solly want to help working men set up and run their own clubs? In brief, he saw too many of them had little to do in their time off apart from visiting the pub where they could easily spend their hard-earned wages on drink and gambling. This hurt them and their families. They needed somewhere else to go in their time off where they could participate in educational as well as recreational activities.

Solly also saw that men were already getting together in some areas of the country such as Brighton to establish their own places of



A typical old concert room at Lowerhouse Mills Social Club in Burnley

recreation. There was a clear desire for a space of their own where they could socialise, relax and perhaps play a game of cards or dominoes.

Solly looked at their efforts as well as gentlemen's clubs and thought they provided a model for working men's clubs. These reasons and ideas were part of the initial impetus for club building. Clubs came about not only because of Solly's efforts in establishing the CIU but also from the men's own endeavours.

And where were these early clubs to be found?

If you mention working men's clubs to many people, they think of somewhere "up north" not places "down South" but this is a fallacy – even now nearly a quarter of clubs are in the Union's six Southern branches.

Although we usually picture early clubs as being set amongst dark satanic mills and rows of two-up two-downs, the geography of early clubs shows us that working people in all parts of the country wanted to have recreational spaces of their own. Farm labourers in rural areas were just as likely to set up clubs due to the lack of other pastimes and to break the monotony of their daily lives.

London was the centre of early club activity. Notting Hill, Paddington and Soho had clubs and the CIU set up its headquarters there in 1862. It is often forgotten that the capital was home to many industries in the 19th century, not only having the docks but railway stations and depots, tile and brick making, to name a few.

Quite a collection of affiliated clubs gathered in the capital and its suburbs, such as Peckham, Hackney and Stoke Newington. Henry Solly always nurtured ambitions for them to be nationwide and looked around the country for existing clubs and groups of men who wanted to set up new ones. As today the CIU offered moral support and practical assistance such as the provision of model rules.

It is often asked which club still in existence can claim to be the longest running one. This is hard to answer as there are clubs that pre-

date the CIU. Reddish WMC, for example, in Stockport was set up in 1857 as the Reddish Library & Literary Institute though its current building with the date 1857 above the door was built in 1978.

Another contender is arguably the Union's most unusual club, Walthamstow WMC in North London which was set up and affiliated to the CIU in 1862. There was a library, games room and discussion room and a strict temperance rule – which still holds today. It has somehow managed to retain its "male only" membership!. Current club President David Huddle says there hasn't been any interest from women and they restrict their membership to just 50, surviving through their income from property.

Coventry WMC also used to claim the title of oldest club in the Union, similarly dating back to 1862. Sadly, this club was forced to close in August 2008.

Several other clubs also have long histories while others didn't stay open long enough to have their existence recorded for posterity.

Northampton WMC is another early club with an illustrious record, being formed in 1863, and was quickly followed by others in the county. Northern men soon saw the advantages of setting up clubs along the lines the CIU recommended.

Men from the great industries that helped to shape the nation, coal mining and shipbuilding, helped to establish many hundreds of clubs around the North East, Yorkshire and Lancashire, some of which can still be visited today.

The manufacturing workers of Manchester became strong club men and at one point in the late 19th century threatened to break away from the CIU and form their own Union of clubs.

As the numbers of clubs expanded, ever further away from London, so the need arose for regional branches to ensure standards were maintained as well as a good line of communication. The first Branch was set up in Swindon in 1894 and the majority of the Union's 28 Branches have existed more than 100 years.

But what about the beer?

The Reverend Solly was a temperance man and he hoped to lead working men away from drink. The fact was, however, that beer was part and parcel of life for many. Some employers even supplied beer to quench the thirst of hard-working men. Beer was often cleaner and healthier than the local water on offer!

Solly accepted the reality of beer's popularity and he didn't want to deter men from using the newly established clubs. The CIU council agreed that each club should decide for itself whether to have a bar. Many chose to do so with any profits made put back into the club's own coffers, rather

than a private landlord's or brewery's. Others remained teetotal such as Walthamstow WMC.

By the end of the 19th century, there were hundreds of CIU clubs up and down the country and they were becoming an established part of working class leisure time. They continued to grow in popularity throughout the 20th century and not even the outbreak of two world wars could halt their expansion!



Club President Ian McDonough outside Reddish WMC in Stockport, which can claim to be the oldest club in the CIU.

A GRAND TRADITION OF CARING



The Union's seaside Convalescent Homes covered the four corners of England and Wales. Clockwise from the North East: Saltburn (above), Broadstairs, Langland and Grange-over-Sands. A fifth home at Nantwich in Cheshire was open from 1948 to 1954.

The CIU has always had a caring side to its work, offering practical help for those who fall on hard times, not only among its members but also in the wider community. Even those in far-off countries feel the benefit of club members' generosity and fund-raising activities.

Clubs have always provided much more than recreational pursuits, entertainment and places to socialise in, though these are all very important.

When the CIU was first established, there was no Welfare State — that didn't appear until 1945. If you got ill or needed hospital treatment, there was no sick pay and very little help on offer. Men who had accidents — as many did since there was no Health and Safety at Work legislation — had to do the best they could or lose their jobs. Disability could lead to poverty, perhaps the dreaded workhouse. Life was very tough indeed.

The CIU, however, wanted to do something positive and practical for club members who suffered sickness or injury. With scant state provision, it set out to promote mutual self-help and benevolent causes.

Long before the NHS came along, club convalescent homes were opened so that those who had been unfortunate enough to experience sickness or surgery had somewhere to recuperate. The very first convalescent home to open was at Pegwell Bay in Kent in 1894 and, not long after

opening, an extension was planned so that more men could benefit.

The CIU promoted fund-raising for the extension and used Club Journal to whip up support, with friendly competition between the clubs. The front cover of the October 1898 edition showed the finish of the "race" with a horse and jockey representing each of the leading clubs heading towards the finishing post.

London's St. James & Soho club raised the most, just ahead of Mildmay Radical, also in London, with Kettering WMC coming third. This showed not only the generosity of early club members but the enthusiasm and initiative they had for fund-raising which continues to this day.

The number of homes eventually rose to five, including the only remaining home, at Saltburn on the north Yorkshire coast, now renamed Saltburn House. This was originally built as part of Henry Pease's model development for his steel and railway workers. The CIU acquired the Centre in 1909 and it still offers holidays and short breaks as well as convalescence. The others were at Langland Bay, near Swansea, Grange-over-Sands on Morecambe Bay and Broadstairs, which replaced nearby Pegwell Bay in 1971.

The homes offered a chance for a week or two by the sea, with regular wholesome meals, fresh air and restorative recreational pursuits. These were very welcome for

working men who could apply for a stay at a home through their club.

As recently as the 1990s the homes were still run by a Superintendent and Matron. The rules were quite strict, particularly in the Victorian times with matrons who were legendary for sticking to them! But in many ways the homes were a treat for recovering club members. They could have a quiet game of dominoes or cards with other clubmen while resting up. Despite the restrictions the homes were like grand hotels.

The importance of such facilities cannot be overstated. Even in the post-war period with its relative full employment and rising standards of living, many working-class families could not afford regular holidays let alone a convalescent period.

During wartime, the homes were taken over by the Government and used for rehabilitating soldiers such as those suffering from gas poisoning in the trenches. Women were admitted to some of the homes in the post-war period as they too needed restorative breaks away from the responsibilities of looking after the home after surgery or prolonged periods of illness.

Such welfare functions sat side by side with the entertainment aspects of the clubs but have often been overlooked. Improvements to living standards have left less need for the Convalescent Homes but this grand tradition deserves to be celebrated!



A PLACE FOR THE FAMILY AND

Many people are surprised to learn how, throughout its history, the CIU has provided facilities and activities for the whole family. Ask anyone whose father was a club member, however, and they will instantly recall the children's Christmas parties where hundreds of excited local kids gathered for trifle, sandwiches, bottles of pop, entertainment and games. And there was always a present handed out to every child at the end.

In previous times of austerity, these parties and presents were a highlight of the year for working class children. As there were around six million members at the CIU clubs' peak in the early 70s a huge slice of the nation's children benefited from their parents' CIU membership. Children were regularly taken along as clubs became increasingly family-friendly in post-war Britain.

Of course, Henry Solly had the interests of families in mind. He did not want to take men away from their homes by setting up clubs; instead, he wanted to get them out of their pub-going, drinking habits so families would feel the benefit of more wholesome pursuits and less drunkenness. Activities for children, such as the annual Christmas party, were incorporated into club life from very early on.

In December 1897, for example, the Northampton Boot & Shoe Operatives Club decorated their hall in festive style and entertained the male members with a huge spread. On the next day, their wives and sweethearts came along and there was dancing too. On the third day, it was the turn of the children to be entertained and fed and they all had a thoroughly good time!



Children enjoying a Christmas party at Canley Social Club in Coventry.

There were so many children at the Central Finsbury Radical Club's annual party in 1911 that it had to be staggered over three days! Club Journal reported that 475 attended on Tuesday, 515 on Wednesday and 554 on Thursday evening.

"To see and hear the children is indeed a tonic; the boisterous laughter at some humorous episode in the pictures; the hearty singing of the popular chorus that Mrs. Moss, our pianist, played so profusely; the genuine enjoyment of the good things provided for creature comfort all made a delightful impression on the adult mind." Every child received sweets, oranges and pastries as they left, all paid for by the club. The children's Christmas party became part and parcel of most club calendars with money set aside specifically for this purpose. Easter was also celebrated with Easter bonnet parades for women and children. Prizes were awarded for the best bonnets and sweets distributed for everyone. It was another exciting day for club children.

Children learnt not only the rules of the club and how to behave properly but also wider social rules and values. They learnt these in an environment that was inter-generational, with grandparents as well as parents all mixing together.

Politicians and social commentators regularly bemoan the undermining of family and social values. Clubs provided, and still do, ideal spaces for play and socialisation, and for acquiring important social and life skills.

Who can forget the club outings?

Rows of coaches lined up outside a club – a common sight on a summer's morning – heading for seaside resorts such as Skegness, Blackpool or Rhyl. The club provided the transport, food and refreshments and maybe a "bob or two" for spending money out of their own funds, which were added to by raffles and other fundraising events.

Senior club members were also treated to Christmas parties and outings as well as regular concerts and dinners. Committees looked



North Lambeth Liberal Club in London organised a club outing on the Thames in the 1920s

A clubland childhood



Derek Dormer's parents with their 12 children. Derek is last on the right. Below: wearing the chain of office with the President's Jewel.

Former National President Derek Dormer was born in 1926 into a club-going family and he found the many traditions he participated in were invaluable in his lifetime of CIU service. Derek was the tenth of 12 children. Throughout his childhood, Christmas parties, wedding breakfasts and other family events were centred on the local club in the railway town of Wolverton, now part of Milton Keynes. His experience was repeated up and down the country in CIU clubs.



AND THE WHOLE COMMUNITY



The Speaker of the House of Commons, Bernard Weatherill invited CIU officials and members of the All-Party Parliamentary Group to his terrace along with Pudsey Bear.

Pictured (left to right) are: Lord Bilston, David Clelland MP, Lord Brooks, John Watts MP, Derek Dormer, the Speaker, Richard Alexander, current National Executive member Carol Goddard, Union Vice-President Brian Winters, and MPs Lawrence Cunliffe, Mick Welsh, Alan Beith and Richard Holt.

Millions made for charities



Old soldier Denis Goddard, aged 71, who walked the 200 miles from York to London, sleeping rough and carrying his 80lb pack, is greeted at Marble Arch by Marianne Johnson from the NSPCC. Below: a Help for Heroes fundraiser at the Paradise Club in Burnley.



after their clubs' older members, treating them with respect and valuing their contributions even in old age such as for their knowledge and skills in games. Younger people would often look up to these amazing older people. In this day and age when social isolation is too often part of daily life for many older people, and when many younger people don't have a place to go, we need our clubs more than ever. It's not just about keeping alive the traditions that have been in place for 150 years; clubs are family places – for all generations to enjoy together.

Hundreds of thousands of club members have raised money for charities over the years – a total that would run into tens of millions if anyone thought to keep count.

Many clubs raise money over the course of the year for a nominated charity. In 1991 the Union itself adopted this idea and encouraged all its clubs to raise funds for BBC Children in Need. A reception was hosted by the Speaker of the House of Commons and a series of events culminated in a charity raceday at Newcastle featuring the Barmaids' Derby with 12 barmaids being sponsored to race over the final furlong balancing a pint of beer on a tray. The result was a cheque for £150,000 in 1990 and £200,000 in 1991 and, thanks to the efforts of the entertainer Roy Castle, this was presented live on TV by Roy himself. Sadly Roy's assertion that his cancer was caused by passive smoking – something unsupported by even his own doctors – was to prove highly damaging.

In following years the Union raised more nationally for Children in Need and for the Macmillan Nurse Appeal and the NSPCC and in 1993 started holding a National Charity Raceday, firstly at Doncaster, and now at Wetherby.

The Club Scribes and Welfare for the Blind Association began in 1901 in London but later extended across the country, providing small grants for blind clubmen and other practical support. They even helped with the cost of installing a lift at the Pegwell Bay home.

A charity that has benefited greatly in recent years from club fundraising is Help for Heroes. Club members are often heroes themselves in what they do to raise money and in doing their bit, they are continuing a great tradition that the CIU has fostered since its inception.



A dinner at North Lambeth Liberal Club, which was the base for many years of the Club Scribes and Welfare for the Blind Association.

TIME LINE – SOME IMPORTANT AND INTERESTING



Hodgson Pratt

- 1862** CIU established by Reverend Henry Solly in London
- 1863** Lord Chancellor Lord Brougham becomes first President
- 1867** Hon. Auberon Herbert, Hodgson Pratt (left) and Thomas Paterson succeed Henry Solly as joint Honorary Secretaries
- 1873** Associate Card inaugurated
- 1875** Chancellor of the Exchequer agrees that clubs supply members and are not liable to tax.
- 1885-1902** Hodgson Pratt serves as Union President
- 1893** CIU opens new office in Clerkenwell Road, London
- 1893-1929** B.T. Hall serves as General Secretary

1894 Former CIU President Lord Rosebery becomes Prime Minister; first Branch formed in Swindon, now Western Counties; first convalescent home opens at Pegwell Bay, Kent

1903 Reverend Henry Solly dies and is buried in the small village of Childrey, Oxfordshire

1907 Hodgson Pratt nominated for Nobel Peace Prize

1909 Saltburn Convalescent Home opened

1910 Four Metropolitan Branches: North East Met, North West Met, South East Met and Kent formed

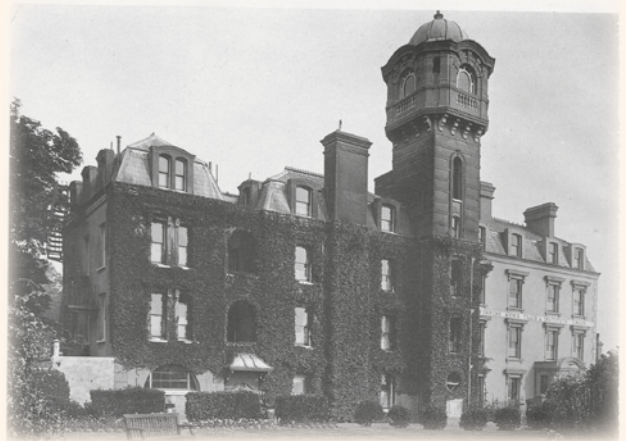
1916 Third Convalescent Home opened, at Grange-over-Sands, now Cumbria

1919 National Individual Billiards competition inaugurated with the CIU providing a trophy

1922 Fourth Convalescent Home at Langland Bay, near Swansea, opened

1930-1951 R.S. Chapman CBE serves as General Secretary

1934 Club Management Diploma introduced



1939 Outbreak of World War Two; there are 2,863 CIU-affiliated clubs

1962 100th anniversary celebrated with opening of brand new head office, Club Union House, at Highbury Corner, London where it can still be found today

1971 Purpose-built Broadstairs Convalescent Home replaces nearby Pegwell Bay, which closed in 1969

INTERESTING EVENTS IN THE CIU'S HISTORY!



B. T. Hall, 1803-1929

B.T. Hall, known as the "Genial Autocrat", served as General Secretary from 1893 to 1929.

He made his mark by helping the CIU to gain strength and stability and become a true Union with the establishment of regional branches; his work was central in ensuring the continuation of clubs into the 20th century.

He visited numerous clubs around the country, offering practical support and assistance as well as a friendly manner and steered the CIU through some turbulent times.

We owe much to his dedication and hard work.



1997 Star of the Bar Kath Simpson from Dorchester Trinity Club

1974

High point of Union membership; there are 4,033 affiliated clubs

1977

Queen Elizabeth II becomes the first reigning monarch to step inside a CIU club when she visits Coventry WMC with Prince Philip, as part of her Jubilee tour of the country.

1978

CIU national Queen of Clubs beauty contest established

1981-2003

Derek Dormer OBE Union President

1983

The All-Party Parliamentary Group of Non-Profit Making Members Clubs founded on December 14th at Westminster

1993

First National Charity Raceday held at Doncaster; Star of the Bar competition for best bar staff first held

2000

CIU National Quiz established

2001

Club Union House redeveloped

2007

Annual General Meeting in Blackpool votes to allow women to buy Pass Cards.



1988 Queen of Clubs Elaine Summers from Bedford Russell Park Club

2011

Carol Goddard first woman elected to NEC

Carol Goddard, the Union's first woman National Executive member

2012

150th Anniversary, June



Having a bit of a flutter

Gambling does take place in our clubs. But it's low level and highly regulated – as it always has been – and committees have to pay close attention to the laws surrounding all aspects of gambling. If people are going to have a flutter, whether through a game of bingo or a gaming machine, then it's better to do so in CIU clubs, which offer regulated environments with gambling just one part of the recreational mix.

It has to be said that a lot of what we can strictly call gambling, such as playing bingo and holding raffles, has usually been about raising funds for the club and charities. People can win prizes, including cash, but they risk little and the club or charity wins out in terms of earning much-needed funds. This form of fund-raising goes back a long way. Early in the 20th century, the card game whist was a moneyspinner! Players would pay a small entrance fee and the winners claimed their prizes but a percentage of the takings was ploughed back into the club's coffers – and this ultimately benefited the members. Wood Green Social Club in North London was one club that held regular whist drives to raise money for building work.

Eyes down, look in

Also known as "housey-housey" and "tombola", bingo has been around for centuries, possibly beginning in Italy as a form of lotto, then travelling to France and Germany. There is evidence of the game being played in Mexico and the United States, where it was popular between the wars as a carnival sideshow game with players marking their numbers with beans, so the game was called "beano" – which became bingo. Advertisements for "tombola books," (bingo tickets) began to appear in Club Journal from the early 1960s with "Bernard Brand" being prominent. The game's importance grew as did the prize money and the legality of running club bingo, including "snowballs" – or rollovers – was called into question; General Secretary Frank Castle had to advise clubs about staging "housey-housey" as some were getting into trouble with the police. Clubs had to distinguish themselves from common gaming houses and run bingo games within such laws as The Small Lotteries and Gaming Act of 1956. This stipulated how much could be made in payment on any one day and the maximum amount of prize money.



Frank Castle

In addition, no private gain was allowed. The only winners were to be the players who marked off the right numbers. Only fully-paid up members or their signed-in guests could play and under-age players strictly forbidden. The rules were updated each time the law was changed and the clubs had to keep up with and abide by these. They generally did and still do after decades of changes and additions to the gaming and gambling laws.

Even now clubs are often unsure about how to run bingo games and the amounts they can legally pay out and need to contact Branches or Head Office for guidance. Bingo became established as a club activity, taking place on several evenings a week, and Sunday lunchtimes too, and was often fitted in during the breaks in the concerts. Playing bingo is now recognised as a beneficial social activity that requires concentration and skill, particularly if marking a lot of tickets. The plus points of the game are often pointed out by charities working with older people. It is a source of motivation to get out and mix with other people rather than staying home alone. It can also help keep them mentally alert. Visiting other clubs where bingo prizes are temptingly large remains common practice and again there are social advantages in this form of club tourism.

And winning a line or full house is always nice!



Members enjoy a game of bingo at Innisfree Social Club in Newcastle.

Gaming machines have variously been referred to as fruit machines or one-armed bandits. At one time they had a lever, or arm, at their side to pull down to start the game. And they usually took all your coins,



hence, the bandit part! Early machines also nearly always featured fruit on their reels – cherries, pears, melons and a few others. The more of the same fruit you lined up, the more you would be likely to win. Cherries were the most likely to appear and if you had them in the first reel, you got the minimum pay-out, which you could

instantly put back in to try again for a bigger prize. As with bingo, these machines could bring profit for the club that could be put to good use but they were also subject to gaming and gambling laws. As the machines were modernised and became more complicated, so did the legal side. We lost that side arm a long time ago and machines are now controlled by microchips. Flashing lights and various noises were also added. A few decades back the "nudge" was invented by Leeds-based Dransfields, who are the Union's recommended suppliers of gaming machines, after a chance encounter in a club. A Dransfields designer overheard a player say how he wished he could just nudge that last jackpot symbol down – and the rest is history. Recent Gaming and Gambling Acts dictate how many machines a club can have, where they are to be placed (away from children) and how much they can pay out as well as the taxes involved such as VAT. The CIU has to be on top of all the legislation and assist clubs as well in their understanding of how to abide by the laws. There has always been a space for small-scale gambling but this is seen as part of normal club life. Serious gamblers go elsewhere – they have never been welcome in CIU clubs and never will be as they are family-oriented places.

It all started with whist...

A visitor walking into most CIU clubs cannot fail to notice the trophy cabinet proudly displaying all the cups and plaques awarded to their various teams and individual players over the years. These are visible displays of an important club tradition because games and sports have been a central part of CIU club life right from the very beginning.

The Union assisted the expansion of club recreational programmes by organising a wide range of inter-club tournaments and providing trophies for the winners. The CIU became one of the largest sports and games bodies in the world, offering a diverse range of indoor and outdoor activities for its members – but it all started with a whist competition.

Early clubs were encouraged to have games for members such as cards and dominoes but with a strict no gambling/betting policy. Any club caught condoning gambling would be expelled from the CIU.

Having a game or two was a good way of relaxing with fellow club members and



The trophy cabinet at Doncaster trades club perhaps it was deemed more likely to take men's minds off drink! Games offered a welcome relief from the long working day in the mine, mill, dock or factory as the men chatted to one another. Where there was space, other games could take place such as darts and skittles.

Having a games room was an ambition of many clubs but smaller ones who didn't have enough room had to plan for bigger premises. Those with a games room and enough money might purchase

a billiard table which would be the pride and joy. Billiards was popular, and the grand, green baize-covered table quite a sight. Having this facility could bring in more members.

Table and cue games developed very quickly with snooker added to the list and, later on in the post-war period, pool. Games were usually free to play or required just a small fee for the table or light. The role of working men's clubs in popularising and promoting these games has largely gone unacknowledged as has its role in persuading the FA to recognise Sunday football.

More sedentary games were also enjoyed such as chess, with tournaments organised between clubs. In 1876, for example, the Jewish Working Men's Club and Institute in London defeated the Bermondsey Institute and had to then contend with St. Pancras Club. Inter-club competitions were enjoyed as a bit of friendly local rivalry.

The CIU became involved in inter-club games at the end of the 19th century. A



Exclusive Money Spinners!

NEW to clubs!

Dransfields Club Roulette

- Unique to the club market!
- Only available from Dransfields!
- Hear the wheel spin and the ball drop!

BE THE FIRST TO GET ONE!



Now you can compete with the betting shops!

The UK's largest range of club gaming machines with regular upgrades!
PLUS – jukeboxes, lottery products, pool tables, multi-game quiz machines and bingo products.



Exclusive to clubs
Dransfields TAX-EXEMPT machines –

Income from these Category B3A lottery machines is exempt from tax! There is **NO VAT & NO LICENCE DUTY!**

- NO VAT, NO LICENCE DUTY!
- NO OVERPRINTING CHARGES!

Call us now on **0845 094 1495**

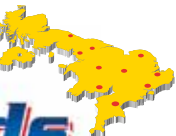
GUARANTEED RAPID RESPONSE SERVICE – WHEREVER YOU ARE!



Dransfields

LOCAL SERVICE, NATIONAL STRENGTH

www.dransfields.com



group of clubs in Yorkshire were running a whist contest and they wrote to the London HQ asking whether the Union might do something for them. They agreed to provide a small trophy and from that small start, the CIU went on to become one of the largest organisers of games and sports activities in Europe! In 1897-8, a nationwide skittles

tournament was set up with ten club teams in the league table. Carlyle was in top position, with 20 "chalks", second was Cobden Club (Northants) with St. Pancras in the bottom place. In the early 20th century the number of games and trophies quickly grew.

The individual billiards competition was inaugurated in the 1919-20 season, for example. Team snooker, was established as a competition during 1925-26. Individual snooker was added to the list of trophies during 1928-29.

The Union offered financial assistance for games and a scheme set up in 1933 allowed Branches to claim an annual grant of £3 for each trophy competed for. The aim was to keep entrance fees as low as possible and to provide better prizes. In 1946 the grant was increased to £4 and later to £5, it is now £10.

Darts was also a popular pastime and to reflect this, the CIU team darts competition was inaugurated in the 1946-47 season. It took almost 20 years later — till 1963 — for the Union to set up the individual darts competition, which has attracted such stars as Bob Anderson, Jocky Wilson and Dennis Priestley.

In the post-war heyday, over half the clubs used to enter CIU national competitions. Any club member could set up a sports "section" if they were enthusiastic enough and had some support. Golf was a more recent addition, reflecting the changing patterns of leisure pursuits in the modern era. But the old favourites of snooker, darts, dominoes and cribbage remain the most popular.



The magnificent billiards room at the St James Club in London's Soho.



Skittles is played in a variety of forms around the country. Above: Toni Palmer from Portishead WMC near Bristol enjoys a game at the club's alley while Bedford North End Club has a skittles table of the type more popular in the Midlands.



THE CIU 1 THE FA 0

Football, particularly Sunday football, has always been popular in clubs and club football teams bring younger people into clubs who might otherwise never frequent them

After the Second World War there was a clash with the Football Association as they didn't recognise Sunday leagues and this caused difficulties for clubs that needed good pitches and referees. Clubs organised such leagues because either men worked on Saturday mornings or because no pitches were available. But football clubs affiliated to the FA could not allow their pitches to be used on Sundays.

Club Journal reported in July 1949: "Pressure is being brought to bear from many quarters to get Sunday Football recognised by the Football Association. Thousands of young men joined their first Working Men's Club on leaving the Forces and efforts were made, and are still being made, to provide them with football contests.

"Few of our clubs possess their own sports grounds, and owing to the scarcity of pitches attempts to form Saturday Leagues have met with little success. Sunday Football is the only alternative, but the clubs cannot affiliate to the FA, and those playing on Saturdays which are affiliated, cannot under Association rules permit their ground to be used on Sundays."

'STUBBORN'

The rejection of a proposal to amend the FA's rules in 1948 was difficult to reconcile with the statement made by its President, The Right Hon. Earl of Athlone, KG, that "Our chief responsibility was to those boys and young men who, without any great ambition in mind, played just because they liked it."

The CIU felt the FA were being "stubborn" and needed to realise that "in this modern world Sunday is not merely a day of rest, but one of recreation for many thousands of our working people."

The FA finally recognised Sunday football in the 55/56 season. The football authorities are famously intransigent. The Football League refused to allow 1955 Champions Chelsea to compete in the European Cup and it was only pressure from the FA that enabled Manchester United to compete in 1957 and 1958 — while FIFA still refuses goal line technology although the Olympics accepted the photofinish in 1912.

Biggest sports programme



Rene Lawson, pictured in 2008 with the Coventry Ladies Darts League trophy she won with Radford Social Club at the age of 86.

Long before snooker and darts became televised mass-audience sporting events, clubs were the places to watch players with the skills that now enthral millions.

Norman Dagley from Hinckley Central Club in Leicestershire became well known in the 1970s, going on to become CIU billiards champion 11 times and eventually World and United Kingdom Professional Billiards Champion. In the 1978 final he defeated a young man from Plumstead Common WMC in South East London, who also won the CIU Snooker Championship that year.

Steve Davis became World Champion six times and snooker's first millionaire but, like many other successful players whose careers were helped by CIU clubs, he never forgot where he came from. He still visited other clubs to play with members and was a role model for other young men, helping to popularise the sport even further. He was continuing a tradition where those who had experience and skill often acted as informal mentors to younger players, who would sit around the tables in awe of the more senior members as they played their games.

Games and sports still offer members the opportunity to enjoy competitions at their home clubs on games nights or to visit other clubs for away matches. In 2011 the CIU's 2,311 trophies were valued at

around £360,000, and included trophies for card games don, phat and euchre as well as domestic science, tippet and aggregate.

Games rooms used to be considered as men-only spaces but increasingly women began to play club games, with separate women's sections. Some proved very capable indeed and also enjoyed games at home and away.

Women formed their own sports sections and leagues, just as did the men, and even ventured outside onto the bowling green. The benefits for men and women of such games were many, including improved health and well-being as well as improved social life.

Rene Lawson is a fine example of a female champion, who at 90 is still playing darts for Radford Social Club in Coventry after 55 years. She took up competitive darts almost by accident in the 1950s when she stepped in to help out a friend's team at the city's Howitzer Club and won the game for them – after which they wanted her in the team.

Later on, Rene was one of founders of the Coventry CIU Ladies darts league. She went on to win many prizes and local fame and shows that, no matter what sex or age you are, there is a place for you in a CIU club.

Like for discount codes

on your marks, get set, go! to *Peeks*

for all your

- Pub & Bar Decorations
- Theme Decorations
- Novelties • Fancy Dress

and sooo much more!

order online today!
www.peeks.co.uk
 tel: 01202 489489

REDUCE YOUR BUSINESS RATES

WE ARE CHARTERED SURVEYORS WITH A PROVEN TRACK RECORD IN REDUCING CLUBS BUSINESS RATES

NO WIN / NO FEE

- RATES ▪ VALUATIONS ▪ BUYING/SELLING ▪ RENT REVIEWS/LEASE RENEWALS ▪
- DEVELOPMENT ADVICE ▪

FEE BASIS AGREED WITH THE CIU

- ALL OTHER PROPERTY MATTERS ▪
- SERVICES PROVIDED NATIONALLY ▪

18 Riverside Studios, Amethyst Road, Newcastle Business Park, Newcastle upon Tyne, NE4 7YL

0191 2725551

www.bissett-kenning.co.uk

rating@bissett-kenning.co.uk

Bissett Kenning are the sole recommended Rating Surveyors for the CIU

BISSETT
 KENNING & NEWISS
 CHARTERED SURVEYORS

RICS The mark of property professionalism worldwide

Facing our problems and looking to the future

The past few decades have seen clubs lose members because of unemployment, the lure of many other pastimes and pleasures now available in their free time, and the rise of more home-based entertainment. Just a few decades ago there were only two TV channels, no DVDs, computer games or Internet and most people stayed in the same jobs.

The smoking ban, introduced in July 2007, has been a contributory factor. Private members' clubs were meant to be exempt but at the eleventh hour were included, much to the dismay of the CIU. The Union continues to work alongside a number of campaigning organisations, such as Save our Pubs and Clubs (SOPAC) that seek to amend the ban and allow separate rooms, rather than forcing smokers, many of them elderly, into the cold. Unlike other European countries our existing law offers no flexibility

Cheap supermarket booze is another reason why people prefer to stay at home. The Government has said it will try to tackle this and the unregulated binge drinking that goes with it but no one is holding their breath.

What the Government has done is burden clubs with legislation, meaning that keeping up with it is virtually a full-time job, a tall order for club members who work on committees in their spare time. Committees also need to keep up with the times in other ways to attract members, particularly younger people. The best clubs have found ways of "packing them in" with special evenings of live music or poker, offer wi-fi or coffee, and have embraced Facebook, the web and even Twitter to advertise what is happening. Basing sports teams at the club can also be crucial on quiet nights and brings in people who might otherwise never use a club.

There are many steps that can make clubs the lively centres of communities they once were – help is available from the CIU about legal and financial matters as well.

Clubs are not an outdated irrelevance, as some critics claim they are, because people still like to gather together to socialise, to mark special occasions and to enjoy themselves.

In tough times, when people feel a bit lonely, hard up and fed up, clubs can offer warmth and companionship, just as they did 150 years ago. Entering a club is like a world in itself and it still offers great value for money!

When a club closes, it's not just the loss of a drinking establishment but a loss to the community; it is an entertainment and sports venue gone for ever.

Government and social commentators talk about the Big Society and broken Britain. Let them look at our clubs which have been helping to "fix" Britain and bring people together for mutual benefit and self-help for all this time.



Dr Ruth Cherrington grew up in Coventry with a club right across the street. Canley Social Club was a central place in her family's leisure time just as it was for the majority of local people. Club life for her was both familiar and yet special and even while working as a university lecturer she never lost the club-going habit and is still partial to a game of bingo.

About the Author

Her personal experiences and in-depth research led her to set up a website in 2008 which has brought world-wide attention to our clubs – www.clubhistorians.co.uk

Ruth's book on clubs "Not Just Beer and Bingo! A Social History of Working Men's Clubs" traces the history of CIU clubs from their early origins and brings the story through to the present with a chapter on their future prospects. All aspects of club life are covered in a scholarly yet highly accessible manner and she draws upon a wealth of information collected from club members past and present.

If you liked reading this short history of CIU clubs, you will enjoy this book.

There will be limited number of copies available later in the year but if you are interested in receiving more information and pre-ordering, then please click on this link- <http://www.clubhistorians.co.uk/notjustbeer/>

• The author would like to acknowledge the assistance of Barry Slasberg, Kevin Smyth, and George Tremlett, author of "Clubmen".

Fit for a Queen

Along with the CIU Her Majesty the Queen also celebrates a landmark anniversary this year.

In 1977 during her Silver Jubilee she became the first reigning monarch to pay an official visit to a CIU club when she visited one of our oldest clubs, Coventry WMC, which could trace its history back to 1862.

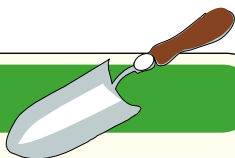
Sadly the club fell victim to some of the problems referred to elsewhere on this page and closed in 2008.



Our movement was founded 150 years ago by a man with a mission. Henry Solly wanted to give working men a positive alternative to the lifestyle that was causing poverty and heartache to whole swathes of society. Today we have a mission that is no less important and challenges no less pervasive than the unbridled drinking and gambling of 150 years ago. We face a horrific sense of apathy towards our neighbours and community; a breakdown of the family unit and a fearfully increasing lack of respect for others and their property.

Working Men's Clubs embrace these old fashioned family and community values, but couch them comfortably in a modern environment. What we need is to rekindle that pioneer spirit that created our movement so that its influence for the good of every individual can be felt throughout society. This responsibility lies with every Executive member of every club, Branch and the National Executive together with every member of every club. If we all believe and back our belief with our support and deeds, then that kind of faith can move mountains. The challenge for our future can be fulfilled!

GARDENING



Predicting the weather this year has been impossible — unless you are a pessimist, but IF temperatures and rainfall are what we expect for this mid-summer month it is a busy time for the gardener. If you are confident there won't be any unexpected late frosts, tender plants such as courgettes, outdoor tomatoes and indoor-sown dwarf and runner beans can be safely planted out once they have been hardened off. Should June prove to be a dry month, it's best to give young veg plants a really good watering once a week rather than sprinkling a little water on them every other day. This encourages their roots to go deeper to find water and gives them a much better chance of surviving during prolonged dry spells. Small repeat sowings of salad crops every fortnight will ensure you can pick leaves throughout the summer.

It's the traditional time to start picking strawberries and to prevent too many being pinched by birds, cover your strawberry bed with a net as soon as the first berries begin to ripen.

Flower power.

Looking ahead to having great summer colour in the garden, it should now be safe to plant out hardened off tender bedding plants as well as chrysanthemums which give superb late summer and autumn colour.

Time too to plant up hanging baskets and pots and should we enjoy some dry weather this summer, they will thrive best if watered twice a day.

You can also plan ahead for next year's garden colour by sowing biennials now – such as Sweet Williams and wallflowers – which will flower in summer 2013.



Queenie is pictured on her first visit to Saltburn House with barmaid Janette Whittney.

Queenie will be a great miss

Queenie Schofield, who is believed to be the Union's oldest member, has died at the age of 106.

Queenie paid her first visit to Saltburn House two years ago with fellow members of the Colchester Belle Vue Social Club and was looking forward to returning this summer. "I was speaking to her just the other day," said North East Met Branch Secretary John Baker. "We used to go out to lunch regularly and she was a great character. "She will be a great miss at the club."

A member of the Belle Vue Club for 50 years Queenie was a curtainmaker by trade and used to make all the curtains and all the buffets for the club, including a special one at New Year.

As well as raising money around the club by selling raffle tickets she is also remembered for her work on the door where she memorably once refused to let former General Secretary Kevin Smyth and his wife Yvonne into the club. Kevin had left his Pass Card in the hotel and the Club Secretary needed to be called before he could be let in!

When asked the recipe for long life, she always replied: "A tot or two of Famous Grouse every evening." Condolences go to her two sons, Michael and Robin, and their families.



CIU SALTburn CENTRE

2012 PRICES AND THEMED BREAKS

To book please ring 01287 622 008

PRICES

Non-member B&B = £36	Club member
Non-member	half board = £32
half board = £42	Convalescent stay = £29

Club parties over 15 people:
£25 per person with one room free.

Club parties over 35 people:
£25 per person with two rooms free.

THREE-DAY RACING BREAKS - £175

Wednesday, June 20th - Saturday, June 23rd.
Racing at Ripon and Redcar.

Monday, August 27th - Thursday, August 30th
Racing at Ripon and Catterick (Wednesday Evening)

GOLFING WEEK

Sunday 1st July - Saturday 7th July.
Wilton, Hunley Hall, Saltburn, Hartlepool and
Seaton Carew £265 full week. 4-day golfing £180.

TURKEY AND TINSEL
Friday 7th December-
Monday 10th December. £170.
New Year Party £180.

All prices include VAT

CellarBright

for clean beer & clear profit!

Do you need to reduce your costs?

Can you really afford to continue pouring beer down the drain?

Benefits of the Cellarbright System

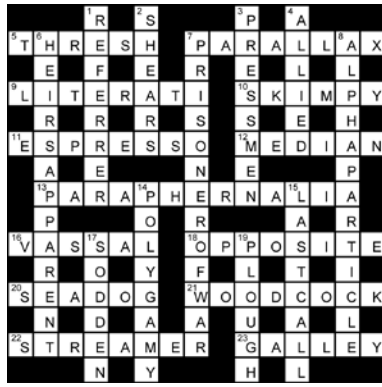
Enables the sale of at least 75% of beer that is usually wasted	It is fully automated
Simple, quick & easy to use	5 to 7 minutes to clean a line
Suitable for all dispense equipment	Free Flow, Metered & Beer Engines
Quality of beer maintained and improved	Health & Safety and Hygiene
Independently tested by a Professor in Brewing	No disruption
New Patent pending technology gives outstanding performance	Optional Remote Monitoring

For a no obligation survey and quotation please contact us
Telephone: 0800 699 0268 Email: sales@cellarbright.co.uk
www.cellarbright.co.uk

CROSSWORD SOLUTION

Congratulations to the five winners of our £10 Prize Crossword for April:

Mr T McNamara of High Street Social, Blyth;
 Mary Richards of Ryde Town Club, Isle of Wight;
 Mr D Crane of Northampton WMC;
 Mr R Sockett of Sheffield Lane WMC;
 Stephen Dale of Smithywood Road WMC, Sheffield.



PRIZE CROSSWORD

Every month we give five £10 prizes to a lucky five correct entrants.

ACROSS

- 7 Mainly, it's a jewel on a string. (5)
- 8 Practical to extend pie in such a state. (9)
- 10 Broken chalice without a hackneyed phrase. (6)
- 11 OfCom men certainly show a start. (8)
- 12 Pessimistic way the conductor starts. (8)
- 13 Rail disaster once spent in Italy. (4)
- 15 Delineated, and not in a mess when sea runs with wind. (3,4)
- 17 Why ease the difficulty when it's rubbish? (3-4)
- 20 Copy sound return. (4)

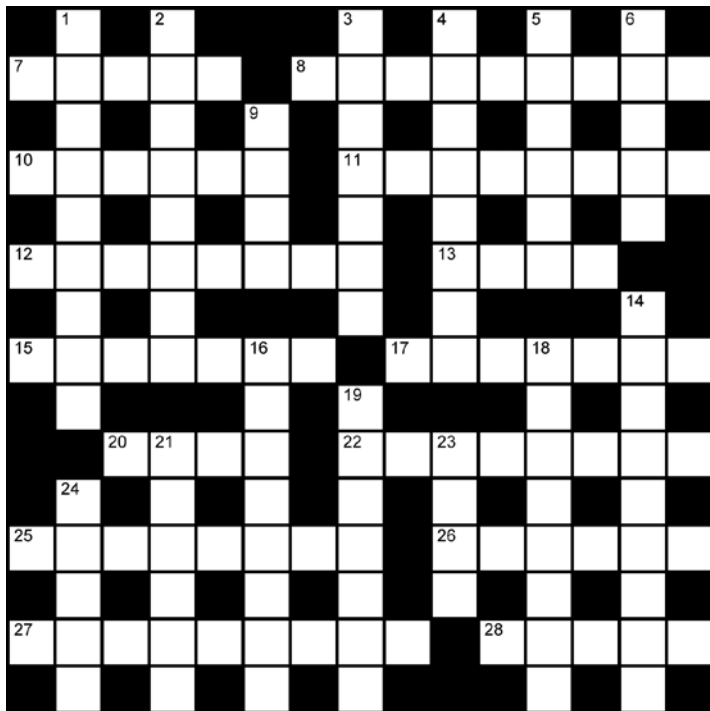
- 22 Asset yielded by brawn. (8)
- 25 Sanctimonious type hears pie thrown about. (8)
- 26 Tank part used for plaster holes? (6)
- 27 Raving EEC plans just cause a grudge. (9)
- 28 Lamps put out for Bible song. (5)

DOWN

- 1 Where to ring when making a call to worship. (4-5)
- 2 Quiet, but oddly centric part of town. (8)
- 3 How to perform a will? (7)
- 4 Again, use disabled company in a way. (2-6)
- 5 Straightaway I learn. (6)
- 6 Knock out the ring,

- replace it with a skill. (5)
- 9 Allow say, plant, to begin with. (4)
- 14 Lefty Tess could be a disease carrier. (6-3)
- 16 Book for the end of it all? (8)
- 18 Winch sounds like there's no air movement. (8)
- 19 Terribly defenceless, fled out from the core. (7)
- 21 Increase is not about to clean the ship. (6)
- 23 Floater said to be in a draughty setting. (4)
- 24 Stock word to have in common. (5)

Send your entry to Crossword, Powdene Publicity, Unit 17, St Peter's Wharf, Newcastle upon Tyne NE6 1TZ, to reach us by June 30th.



Name.....
 Address.....

 Club.....

FOR SERVICE

Branch Executive Awards

Harry Jackson, 10-year Award - Burnley and Pendle Branch
 Raymond Edwards, 10-year Award - Monmouthshire Branch

Centenary

West Byfleet Social Club - South East Metropolitan Branch

Long Service Award

Patrick Healey, Burnley Miners Social Club, Burnley and Pendle Branch
 Geoff Clarkson, Darlington Club, Co. Durham Branch
 Howard Redfearn, Ferryhill WMC, Co. Durham Branch
 Graham Speed, North Biddick & Dist. Club, Co. Durham Branch
 Michael Couzens, Cwmaman W.M & Social Club, South Wales Branch
 Paul Kew, Wakefield Carlton WMC, Wakefield Branch

Distinguished Service Award

Walter Goodfellow, Mickley & Dist Social Club, Northumberland Branch

Certificate of Merit

Stephen Foster, Easington Colliery Club & Inst, Co. Durham Branch
 Alan Richardson, Ferryhill WMC, Co. Durham Branch

CLUB NOTICES

Club Applying for Membership of the Union

Moulton Verdin Institute Working Men's Club
 Church Street, Moulton Northwich CW9 8PA (North Staffs Branch)

Clubs Withdrawn

Rusthall Working Men's Club Kent Branch)
 Eastwood & District Victory Club (Derbyshire Branch)
 Rosyth Ex-Servicemen's Club (Scottish Branch)
 New Craighall Miners Welfare Club (Scottish Branch)
 Scunthorpe & Fordingham Coronation Club (Doncaster Branch)
 Tonyrefail Non-Political Working Men's Club (South Wales Branch)
 Mosborough Miners Welfare Club (Derbyshire Branch)
 Padstow Institute (Western Counties Branch)
 Cramlington Village Comrades Social Club (Northumberland Branch)
 New Marske Institute Club (Cleveland Branch)
 Thrapston Beehive Club (South East Mids. Branch)
 Bilston & District Labour Club (West Mids. Branch)
 Yateley Social Club (Wessex Branch)
 East Grinstead Ex-Services Club (South East Met. Branch)

Expulsions

Not now members of the following clubs. These should not be Admitted as Union associates.
 Ms Jean Parkinson/Horvath, Loftus West Road Social Club, Cleveland
 Miss Emma Brown, Loftus West Road Social Club, Cleveland
 Mr R. Walker, Prudhoe Social Club, Northumberland.

Suspensions Expiring on Dates Mentioned

Mr L Penn, Littlehampton Trades & Labour, West Sussex April 2013
 Mr David Atkin, Severus Social Club, York (30 September 2013)

Club Closed

Consett Victoria Social Club (Durham Branch)
 Kingstanding RBL Warriors Club (West Midland Branch)
 Stainforth Central Club (Doncaster Branch)
 Conisbrough Castle Club (Doncaster Branch)
 Belmont Social Club (Doncaster Branch)
 Trimdon Grange WM Social Club (Durham Branch)
 Portsmouth Labour Party Club (Wessex Branch)

OBITUARIES

STAN GAYTON

The Committee and members of Brafield WMC, near Northampton, regret to announce the death of former Committee member and Steward Stan Gayton. Stan joined the Committee in 1969 and gained the 10-year Certificate of Merit. He and his wife Linda took over the club bar in 1989 and ran it until 2007. Stan was born in Brafield, making him a true "Braffie." He liked a bet and a pint and was looked on as a real character. The church was standing room only for his funeral. Condolences go to Linda and to his three children and grandchildren.



CLUB OUTINGS . . . CLUB OUTINGS

BLACKPOOL & LANCASHIRE

BLACKPOOL No. 1 WORKING MEN'S CLUB & INSTITUTE

9-17 Bloomfield Road, Blackpool FY1 6DH. Tel: (01253) 343 508
 Extends a warm welcome to all CIU associates and bona-fide guests.
 ★ FREE ENTERTAINMENT ★
 7 nights throughout the summer season (weekends winter).
 Change of artists nightly.
 Coach parties welcome.

CONTACT THE SECRETARY IN WRITING

BLACKPOOL ROYAL BRITISH LEGION CLUB

33-38 King Street, Blackpool FY1 3EJ.
 Enjoy your visit with us at the club.
 Good all-round entertainment.
 Bookings for coach parties accepted.
 Room available for hire.
 Sec: Mr K Teasdale or Treasurer Mrs R Thomas
 Club: (01253) 626 308; Office: (01253) 290 322
www.blackpoolrbl.co.uk
 email: blackpoolbritishlegion@gmail.com

BLACKPOOL LMS SPORTS & SOCIAL CLUB

Back Ribble Road, Blackpool FY1 4AB
Tel: (01253) 625040
 A warm welcome to all CIU members and bona fide guests. Free entertainment, bingo, super-5, raffle and Find the Joker.
 Coach parties welcome. Room available to hire. Children over the age of 3 are allowed in the club.

You've been to the rest - now visit the best!

Voted the best club in the North West on TV's "The One Show"

BLOOMFIELD CLUB & INSTITUTE

128 Bloomfield Road, Blackpool FY1 6JW
 Free entertainment seven nights a week along with your favourite games
 • Bingo • Tote • Supa5.
 The club is on one level with disabled toilet facilities. Coach parties and football fans welcome.
Contact Secretary on (01253) 344583

Visiting Blackpool? Try Brun Grove WMC

Brun Grove, Blackpool. Tel: (01253) 762 186
 No admission charge to concert room.
 No beer price increases for visitors.
 Bingo - Tote - Raffle
 All associate members welcome.
 Parties welcome.

Brunswick WMC Bethesda Road, Blackpool.

Telephone: (01253) 624 208
 Coach parties welcome, also parking available.
 Entertainment 7 nights, comedians at weekends throughout the summer season. 2 large TV screens, cold food available. All branded doubles on offer. Smoking area at rear in beer garden. Wheelchair friendly. No beer increases for visitors.
 Contact Billy Hill, Club Secretary.

GOING TO THE RACES? Why not try BURNLEY MINERS WMSAC as seen on TV

2 minutes from the Town Centre and Turf Moor.
 Entertainment Friday, Saturday and Sunday.
 Coach parties by appointment.
 Breakfast and/or evening meal.
Tel: Bar (01282) 422 791 or Office (01282) 835 429

KNOTT END WORKING MEN'S CLUB

Offers a great welcome to CIU members and parties. Why not try
 • a visit to the seaside • a ferry ride to Fleetwood
 • a bowling green competition
 or just our good food and entertainment.
 SALISBURY AVENUE, KNOTT END-ON-SEA, LANCs.
 Office telephone (01253) 810362
 Tel: Secretary Mrs Karen Bradford for dates and details
(01253) 812 226

ROSEGROVE UNITY Working Men's Club

Holme Lodge, Rosendale Road, Burnley, Lancs, BB11 5DL.
 Situated 2 minutes from Junction 9 on M65.
 Large car parking space available.
 Entertainment Friday, Saturday and Sunday.
 Bookings must give 14 days' notice.
contact Secretary on 01282 431 363 or e-mail rosegrove20@gmail.com

BRIGHTON & SUSSEX

Brighton Trades LABOUR CLUB

Lewes Road and Elm Grove
www.btlic.ciu.org.uk
 Live entertainment Saturday evenings.
 Brighton Races, city and beach nearby.
 Main bus route right outside the door. Coaches welcome (please call first).
Tel/fax: Secretary (01273) 601 101 Email: admin@btlic.ciu.org.uk

Eastbourne & District Trade Union Club & Institute Ltd.

Clapham House, 48 Seaside, Eastbourne, East Sussex BN22 7QL.
 A warm welcome is guaranteed to all CIU associates and guests. A good selection of reasonably priced beers and spirits available. Temporary membership can be arranged at the door for all holiday makers. Large groups or coach parties are welcome with prior arrangements. Situated 5 minutes walk from the beach. Please contact secretary on (01323) 727703.

EASTBOURNE WORKING MEN'S CLUB

102/104 Firle Road, Eastbourne BN22 8ET.
Tel: (01323) 723322
Email: eastbournewmc@googlegmail.com
 Visit the one and only workers' club in our lovely South Coast town. We have live music, raffles, darts, snooker and pool. See our Facebook page for coming events. A warm welcome to CIU members all year round.

Littlehampton Trades & Labour Club

Wick Street, Wick, Littlehampton BN17 7JH. Telephone (01903) 714 054
 A warm welcome awaits all visitors. Facilities include darts, crib and Sky TV. Catering for private parties can be arranged (14 days' notice please). Live entertainment every Saturday.
 Coach parties welcome with prior notice, please contact the Secretary.

ESSEX & EAST ANGLIA

COMRADES SPORTS & SOCIAL CLUB, CLACTON

A warm welcome awaits at both our premises. 205 Old Road, a short walk from seafront, has live entertainment Saturday evenings, disco Sunday afternoons, back garden and car park. 9 Colne Road is one minute from sea front. Live entertainment Tuesday, Thursday, Saturday afternoons and Saturday evenings. Pool, darts, raffles and bingo at both. Coach parties welcome by ringing the Secretary in advance on (01255) 423 314.

HUNSTANTON (NORFOLK) UNITED SERVICES SOCIAL CLUB

A warm welcome to all visitors. Large enclosed garden and car park with sea views. Three snooker tables, also pool table and darts. Bingo Mondays and Thursdays and one game Saturday evening. Live weekend entertainment. Catering arranged on request. Disabled friendly. Close to Sandringham Royal Estate, Coaches welcome midweek.
Contact Club Steward on (01485) 533360.

Naval & Military Club (Southend-on-Sea)

20 Royal Terrace, Southend SS1 1DU.
Tel: (01702) 347169
 A warm and friendly welcome awaits you. Large rear garden and roof terrace with fantastic views overlooking the seafront and estuary. Live entertainment Saturday nights and Wednesday afternoons. Hot and Cold Food available every day of the week. Local Real Ale Club of the Year. Coach parties welcome but must contact the Steward, Kevin Arkin prior to the visit.

Walton-on-Naze RBL Club

Vicarage Lane (off High Street). (01255) 674 153
 Visiting the seaside? A warm welcome and friendly atmosphere - two minutes from beach front.
 Live entertainment at weekends - sing-a-long Thursday afternoons - large screen TVs - pool - darts. Good range of drinks and bar snacks available. New membership available - CIU and RBL affiliated.
 Coach parties welcome! Contact Secretary

HAMPSHIRE & ISLE OF WIGHT

Lindford & District Working Men's Club

Liphook Road, Lindford, Bordon, Hampshire GU35 0PN. Telephone: (01420) 472 228
 A warm welcome is extended to all Associate Members. Only stipulation is children under five years old must leave the club by 9pm. Just off the A325 road between Farnham and Petersfield. So why not call in on your way to and from the south coast. Please give the Secretary 14 days' notice of party visits.

Newport (I.W.) Social Club

13-14 Lower St James Street, Newport, Isle of Wight PO30 5HB. Tel: (01983) 527 291
 Situated in the centre of town, with a warm friendly atmosphere where you can bring family and friends. Open all day, function room, snooker room, darts, pool and jukebox. Kitchen now open 7 days a week for hot and cold food. Coach parties always welcome by prior arrangement.

ROYAL BRITISH LEGION SOCIAL CLUB (COWES) LTD.

85 High Street, Cowes, Isle of Wight PO31 7AJ.
 A warm and friendly welcome is extended to all visitors. Situated on the sea front with panoramic sea views from the stage dining area, the club has one of the best views in the country. Ideal for parties and outings. Freshly prepared meals available 7 days a week. Disabled facilities. Coach parties very welcome, please notify Secretary or bar manager in advance. Entertainment Friday and Saturday evenings.
Tel: (01983) 292921 email: rblcowes@onwight.net

HEREFORD & WORCESTERSHIRE

Hereford Welsh Social Club

1 Hinton Road, Hereford, HR2 6BL.
Tel: (01432) 269038/285974.
 Email: herefordwelshclub@hotmail.co.uk
 A friendly welcome is extended to all Associate Members. Live Entertainment every Saturday evening.
 Hot and cold food available. Coaches welcome (please contact Secretary prior to your visit).
 Please visit our website:
www.herefordwelshsocialclub.co.uk
"Hereford's most popular social club"

(HEREFORD) RICHMOND PLACE CLUB

69/71 EDGAR STREET, HEREFORD HR4 9JP
 A warm and friendly welcome to all associates, whether you are visiting for the races, football or just passing through. Live entertainment every Saturday. Sunday-Country & Western/Swing and Jive. Restaurant with hot and cold food available/Sunday lunches (Book in advance) Disabled facilities. Real Ales.
 Coach parties very welcome.
Contact Secretary, Les Walker on (01432) 356 529.

KENT

BEXLEYHEATH WMC

Royal Oak Road, Bexleyheath. DA6 7HG
 Telephone (0208) 303 2163
 Friendly atmosphere, comfortable surroundings and an excellent range of beers to quench your thirst. Everything you require on your visit to Bluewater and Lakeside shopping centres.
 Refreshments available.
 (Please give advance notice).

Let people know about your club by taking out an advertisement in our Club Outings guide for as little as £20 a month.

Thousands of club members take part in organised social trips or travel to sports events outside their own area. If you are close to a football ground or a racecourse, or in a convenient place to make a refreshment stop - let them know.

Ring Chris Brewis on (0191) 265 0040 or email cj@powdene.com

SOUTHBOROUGH MEN'S CLUB

Forge Road, Southborough, Tunbridge Wells TN4 0EX.
Tel: (01892) 529 304; Office: (01892) 523 832
 A warm and friendly welcome is extended to all Associate members and guests. Ideal for parties and outings from the coast, we have frequent live entertainment on Saturdays, bingo on Wednesdays and Sundays. Sky TV, snooker and pool. Club open all day Friday, Saturday and Sunday. Coach parties and catering by arrangement.

SUNDRIDGE PARK WMC

134 BURNT ASH LANE, BROMLEY.
Tel: (020) 8464 3638 (Office); (020) 8460 6348 (Club)
 Located close to A21 and A20. A warm welcome is extended to all visitors. Two bars serving a wide range of drinks. TV in bar and the lounge. Purpose-built snooker room with four tables. Live entertainment Saturday and Sunday evenings. Coach parties by prior arrangement with the office.

Wainscott Institute (WMC)

4 Wainscott Road, Wainscott, Rochester, Kent ME2 4LB.
Tel: (01634) 717 464
 A warm welcome is extended to all CIU associates. Live music & bingo on a Saturday night. A range of facilities including snooker, pool & darts. We welcome coach parties by prior arrangement with the steward. Buffet refreshments can be arranged. We are close to all the motorways via the Medway towns. CHILDREN ARE WELCOME.

LEEDS & WEST YORKSHIRE

Visiting Blackpool or Yorkshire Club? Haydock Park or York Races?

Then call at: Elland Working Men's Club Roseberry Street, Elland, West Yorkshire HX5 0HT
 For your breakfast on the outward journey. And for an evening's splendid entertainment on your way home. We are only 2 miles from Junction 24, M62 on the A629. A warm welcome extended to all Associate Members. Live entertainment on Saturday and Sunday evenings. Dancing on Thursdays to our resident organist. Fully modernised Concert Room and Lounge. Excellent Games Room. Floodlit Bowling Green. Large Car Park. Coach Parties welcome - please let us have 14 days' notice in writing to the Secretary Steve Graydon. Tel: Club (01422) 373 023. www.ellandwmc.web.com
 Telephone pre-bookings to be confirmed in writing to the Secretary.

Belle Isle WMC

Belle Isle Road, Leeds LS10 3PE.
 Warm and friendly club with large car park, good value beer and large concert room. Live bands Friday, Saturday and Sunday. Coaches welcome.
Contact Secretary on (0113) 2718 768.

CLUB OUTINGS . . . CLUB OUTINGS

SWARCLIFFE WORKING MEN'S CLUB

Swarcliffe Avenue, Leeds LS14 5DE
A warm and friendly welcome always assured in the comfortable surroundings of our recently refurbished club. Live entertainment every Friday, Saturday and Sunday evening. Relax in the quiet of the lounge or try a game of snooker on one of our three superb tables.
Big screen Sky Sports TV.

Planning a day at the races?

York, Wetherby, Ripon.

We are 2 minutes from the A64 and 5 minutes from the M1. Breakfast and evening meals for large parties available by appointment.

Contact: Glen Doyle (Secretary)

(0113) 2959100

LEICESTER & EAST MIDLANDS

NEW PARKS SOCIAL CLUB & INSTITUTE LIMITED

Battersbee Road, Leicester LE3 9LD
All coach parties welcome, with 14 days' notice to the secretary. Fully air conditioned large concert room. Hot and Cold Food available. Sky TV shown on big screen in the games room. Children allowed Friday and Saturday nights. If you have any questions please contact the secretary on Telephone (0116) 2333 305 or Fax (0116) 2333 303.

Nottingham Oddfellows Club

89 Humberstone GATE, Leicester.
TELEPHONE: (0116) 262 0181
262 5404 (Evenings) - CIU Affiliated

- ★ City Centre Club
- ★ Coach park right outside premises
- ★ 2 minutes from centre of Leicester

Coach parties and parties always welcome. Food supplied hot or cold - 7 days' notice or please phone prior to visit. Children welcome. Dances Monday, Tuesday and Friday. Entertainment available.

Phone or write to Secretary Eric Johnson

SAFFRON LANE ESTATE WMC

429 SAFFRON LANE, LEICESTER, LE2 6UF
Welcomes all CIU members to our friendly club here in Leicester. Only 5 minutes from the M1 junction 21 and close to the racecourse and the football, rugby and cricket stadiums.
Clean, comfortable and fully air-conditioned. Please visit our website where you will find details of all our facilities and activities.
www.saffronlanewmc.co.uk

SKEGNESS EX-SERVICE CLUB

2 Grand Parade, Skegness, PE25 2UN.
Telephone: (01754) 762113
Located on the seafront near the clocktower, 2-3 mins from town centre. Lounge bar, pool/children's room, 1st floor patio area. Reasonably priced beers/lagers and house doubles. Selection of chilled baps. Live entertainment every Saturday (Sundays main season). Open 11.30-11.30 most days. Pre-booked coaches welcome - come to a completely refurbished 21st century club.

LONDON

CRICKLEWOOD TRADES HALL CLUB

134 CRICKLEWOOD LANE LONDON NW2 2DP
TEL: (020) 8452 8614
A WARM WELCOME TO ALL AFFILIATED MEMBERS. COACH PARTIES WELCOME BY PRIOR ARRANGEMENT. 5 MINUTES FROM WEMBLEY STADIUM AND 2 MINUTES FROM BRENT CROSS SHOPPING CENTRE. LIVE BANDS AND BINGO ON SATURDAY AND SUNDAY NIGHTS. CONCERT HALL AVAILABLE FOR HIRE.

DONE OUR BIT EX-SERVICEMEN'S CLUB

128A MAYGROVE ROAD, LONDON NW6.
OFFICE: (020) 7624 3701; CLUB: (020) 7624 3603
Coach Parties welcome by appointment with the Secretary. Entertainment Friday, Saturday and Sunday. Food by arrangement. 15 minutes from Wembley Stadium. 10 minutes from West End. No children under 16 on Saturday.

THE HAMMERSMITH CLUB

Rutland Grove, London W6 9DH
10 mins' walk from Fulham FC and less than 25 mins by local transport to Chelsea and QPR. A warm and friendly welcome to away fans looking for good hospitality and a relaxing drink.
Also 20 mins to Westfield, Europe's largest shopping centre and 30 mins to West End theatres. Contact us on (020) 8748 5760 or visit www.hammersmithclub.net

HARROW ROYAL BRITISH LEGION

Northolt Road, South Harrow HA2 0DW.
Extends a warm welcome to all Associate members and guests. Situated 10 minutes from the A40 and 20 minutes from Wembley Stadium. We have live bands every Saturday and Sunday night. Catering on request. Coach parties welcome with prior notification to Kath or Roy Roberts. Telephone: (020) 8422 1222.

Hayes WMC

Pump Lane, Hayes, Middlesex UB3 3NB.
Telephone: (020) 8573 1721
e-mail: bobbybell@aol.com

Why not visit the flagship of clubs in the South? Ascot, Kempton Park & Sandown racecourses all nearby. Live bands every Friday and Saturday night. Late night cabaret last Saturday of every month, at least 3 acts, charge for entry, late bar. Catering available weekends, orders taken in advance to your requirements. Visit our website:

www.hayesworkingmensclub.com
for our full entertainment programme. Coaches welcome by prior arrangement with the secretary.

ISLEWORTH CLUB

Goodenough House, 109 St John's Road, Isleworth, Middlesex TW7 6PN. Telephone: (020) 8560 2569
We are good enough - are you?
5 minutes from Twickenham Rugby and only 15 minutes from Kempton and Sandown. Call in on your way and give us a try. Pick your winners from our varied selection of popular beers which are available in either our large Concert Room or Lounge. Close to the M4 and M3. Please give prior notice for parties. Coach parties are welcome.

WATFORD EX-SERVICES CLUB

12/14 St Albans Road, Watford, Herts WD17 1BN
Near junction 5 or 6 M1. Short walk from Metropolitan Line or Watford Junction. 25-30 mins from Wembley. Music every Saturday night and food served from 12pm to 8pm 7 days a week. Live football on big screen, pool table, dartboards, quiz night every Friday. Coach parties welcome by prior arrangement. Contact Alf Jobson Secretary (01923) 236687

Wealdstone Social Club

Railway Approach, Harrow, HA3 5BX.
Tel: (020) 8427 3334
email: secretarywsc@btconnect.com
For 15 min connection to WEMBLEY STADIUM. Coach parties welcome. Free parking all day. Please arrange with Secretary for bookings. Function Hall available for private parties. Friendly staff - great beer - good company

NORTHAMPTONSHIRE & CAMBRIDGESHIRE

St James Working Mens Club

Weedon Road, St James, Northampton.
A warm welcome awaits all club members. Lounge, Games Room and large Concert Room. Parties welcome, catering if required by prior arrangement. 5 minutes M1, Junction 15A. Please contact Secretary Mrs P. Webster. Tel: (01604) 456 602 www.stjameswmc.co.uk

SHEFFIELD & SOUTH YORKSHIRE

ARMTHORPE CORONATION CLUB

Tranmoor Lane, Armthorpe, Doncaster DN3 3BS.
Handy for racecourse and Doncaster Rovers. Close to M18. Big screen TV, entertainment every weekend. Ring Club Secretary Alan Jones on (01302) 831 393

Arundel Ex-Servicemen's Club

City Road, Sheffield
A friendly Club close to Town Centre Facilities include a 500 seat Concert Room, two other lounges and a Games Room. Great Cabaret every night except Tuesday and Wednesday. Coach parties please contact Mr B. Simmonite. Children allowed up to 10 years Catering for Buffet if required.
Telephone: (0114) 239 7151

CARCROFT VILLAGE WMC

Chestnut Avenue Carcroft, Doncaster DN6 8AG
Extends a warm welcome to all CIU affiliated members. Coach Parties welcomed by prior arrangement. 1 mile from A1 and close to M1, M18 and M62. Top class entertainment every weekend. Handy for Doncaster Races and trips returning from North or South coastal routes. Big Screen Sky TV and premier football. All enquiries to John Oldroyd, Secretary on (01302) 725 497. www.carcroftvillagewmc.org.uk

Hawthorn Recreational & Social Club

Goodison Boulevard, Cantley, Doncaster. Tel: (01302) 536 565
Easily accessible for the Racecourse.
Big screen Sky TV.
Artistes on Saturdays.

INTAKE SOCIAL CLUB

Craithie Road, Doncaster DN2 5EG.
We are the closest club (5 minutes' walk) to Doncaster Racecourse. (See Page 19 for offers). Bar snacks available. Tremendous value-for-money bar prices.
Contact Secretary Tom Forester in advance on: (01302) 320 036 or email intakesocialclub@yahoo.co.uk

Skellow Grange WMC

Skellow Road, Skellow, Doncaster DN6 8JL.
Tel: (01302) 338 304 www.skellowgrange.com (Secretary: R. Lumley)
It's 1/2 mile from AIM motorway links gaining access from M62, M18, M1. Completely renovated club, top class entertainment at weekends and top class money tombola through the week. Bus parties welcome, ample parking space. Handy for Doncaster Races or call back from the coast. - All associates of CIU and guests welcome -

THE WESTMINSTER RECREATIONAL CLUB

Westminster Crescent, Intake, Doncaster DN2 6HU
Sited just off Leger Way (approximately 1/2 mile from main Race Stands). Coach parties welcome. Large car parking area. Artistes Friday/Saturday night.
Telephone (01302) 812 103/4

SURREY

CHERTSEY SOCIAL CLUB

Pycroft Road, Chertsey. 5 minutes M25 J11.
Country Club 1st Monday monthly; Line Dancing Wednesday; Bingo Thursday, Saturday and (fun) Tuesday afternoons. Live music Saturday; some Fridays. Thorpe Park 5 minutes; handy for Epsom, Ascot, Sandown, Kempton Park, Windsor Castle/racecourse and Chessington. Coaches and buffet/hot snacks by prior arrangement.
Tel: (01932) 563 265.

EGHAM UNITED SERVICES CLUB

111 Spring Rise, Egham, Surrey TW20 9PE.
"North Surrey CAMRA Club of the Year 2008 & 2009"
"Finalist for CAMRA Club of the Year 2009"
Located 5 minutes from J13 M25, handy for Windsor Castle and races, Kempton, Ascot, Epsom and Sandown. 5 mins from Egham Station on the Waterloo to Reading line. Three real ale and cider festivals a year. www.eusc.co.uk
Tel: (01784) 435120 or (07738) 714572 (Real Ale Festivals and Party Bars also arranged)

DAY OUT RACING ESHER W.M.C.

142 Esher High Street, Esher, Surrey.
Telephone: (01372) 467 758
Sandown Race Course within walking distance. Kempton Park and Epsom also nearby.
A warm welcome is extended to all associate members.

Walton Working Men's Club

21A Church Street, Walton-on-Thames, Surrey KT12 2QP.
Extends a warm welcome to Associate Members. Near M25/M3, Sandown and Kempton Racecourses, Hampton Court, Wentworth, Twickenham Rugby and Thorpe Park. Ideal fishing - River Thames. Dancing to live music Saturdays/Sundays. Coaches. In writing to the Secretary.
Telephone: (01932) 220 361.

THAMES VALLEY

THE ASHTON CLUB

24A SHEEP STREET, BICESTER, OXON
A friendly welcome is extended to all. Snooker, pool, darts, dms, bingo, Sky TV, functions etc. Coach parties welcome. 40 mins from Newbury, Towcester racecourses, 5 mins from Bicester village shopping centre, and 5 mins from J9 M40. Open all day. For more information please call the manager on (01869) 252160

Banbury Trades & Labour Club

32 West Bar Street, Banbury, Oxon OX16 9RR.
Tel: (01295) 215 7119 (H); (01295) 254 168 (Club).
A warm welcome is extended to all Associates. Coach parties welcome with 14 days prior notice to Secretary Joan Conley. Live entertainment on Saturday night. Food available. Please contact Secretary with your booking.

WALES

Bettws Social Club

Lambourne Way, Bettws, Newport, Gwent.
A warm friendly welcome assured to all CIU affiliated members and guests. Less than 10 minutes from junction 26 of the M4. Coach parties welcome by prior appointment. Live entertainment every Saturday evening. Catering can be provided by arrangement. Tel: (01633) 858 780.

CARDIFF WEST END SOCIAL CLUB

COWBRIDGE ROAD WEST, ELY, CARDIFF CF5 5BY.
A very friendly welcome to CIU Associates and their families from CARDIFF'S PREMIER SOCIAL CLUB.
10 minutes from M4.
15 minutes to city centre.
Millennium Stadium, Cardiff International Arena, St. David's Hall/Centre, Cardiff Bay.
Live entertainment every Saturday Night with Bingo/Raffle/Tote/Disco
FULL SKY SPORTS/RACING UK
Hot and cold food available.
COACH PARTIES MOST WELCOME.
Telephone: (029) 20594004

Going to Premiership Swansea City or racing at Ffos Las? Visit

MORRISTON WMC

11 Slate Street, Swansea SA6 8AA.
A friendly club which makes visitors welcome. Liberty Stadium 15 minutes, Ffos Las 45 minutes, Ospreys 15 minutes. 10 minutes from M4 Junction 45. Coach parties welcome with advance notice.
Ring (01792) 771580

Rogerstone and Bassaleg Social Club

1 Tregwilym Road, Rogerstone, Newport NP10 9DW.
A warm friendly welcome assured to all CIU affiliates and guests, less than 10 minutes from junction 27 of the M4. Coach parties welcome by prior appointment, live entertainment every Saturday evening.
Telephone: (01633) 893 508.

CLUB OUTINGS . . . CLUB OUTINGS

WARWICKSHIRE & COVENTRY

BEDWORTH EX-SERVICEMEN'S SOCIAL CLUB & INSTITUTE

Rye Piece, Bedworth, Nr. Nuneaton, Warwickshire. Tel: (024) 7631 3236
 Extends a warm welcome to all associates. Restaurant facilities Monday to Saturday - Bar snacks also available. 6 minutes from junction 3 of M6. Approx. 5 miles to Coventry City. Saturday/Sunday night entertainment, live music, bingo, bar and lounge. Contact Secretary for bookings.

Willenhall Social Club

Robin Hood Road, Coventry CV3 3BB. Secretary: (024) 7630 1222 or 7630 3278. Welcome to all Associate Members. Entertainment every Saturday and Sunday night in concert room (seats 600). Bar, games room and luxury lounge facilities. Large car park. Hot and cold snacks available. 10 minutes from City Centre. No Children Allowed. Coach parties apply to Secretary.

HEN LANE SOCIAL CLUB

Beacon Road, Holbrooks, Coventry CV6 4DS. 5 minutes from M6 Junction 3, 10 minutes' walk from Ricoh Arena, minibus from club on match days. Excellent function room and facilities. Hot and cold snacks available at all times. Prior notice required for coach parties and catering (menu sent on request). Please contact the Secretary. Tel: (024) 7672 4830; Office: (024) 7672 4832.

UNICORN SOCIAL CLUB

Holbrook Lane, Coventry CV6 4DE. (5 mins from M6 J3). Just 15 minutes' walk from the Ricoh Arena, home of Coventry City Football Club. Excellent function room and facilities including games room and bar with large screen satellite TV. Modern air-conditioned facility with live music every Saturday evening and hot and cold food available. Prior notice required for coach parties, including official supporters' clubs. Please contact the Secretary at: unicorncoventry@yahoo.com or by telephone on (024)76 684741

WEST COUNTRY

The Cabbage Patch Club

LAWRENCE WESTON SOCIAL CLUB
 Lawrence Weston Road, Bristol BS11 0ST.
 Extends a warm West Country welcome to those travelling to holiday destinations. 3 mins from Junction 18 M5. 10 minutes M4. Coach parties by arrangement.
Ring (0117) 982 9148

Poole Labour Club

22 Wimborne Road, Poole, Dorset
 Tel: (01202) 674 059 / 686 256
 Offers the 3 S's to all affiliated members, Sea, Sand and Speedway! Centre of Poole, 20 minutes from Bournemouth, 2 minutes from Poole Stadium for Speedway and Greyhound Racing. Good beer, warm welcome, open all day. Entertainment on Saturday nights, Tuesday Tea Dances. Darts, Skittles, Snooker, Pool and Dominoes games can be arranged. Certain restrictions apply to children.
 Contact Secretary for details.

WESTON-SUPER-MARE WMC

Orchard Street, Weston-super-Mare.
Telephone: (01934) 418 202
 A warm welcome is extended to Associates and their families in Weston's premier club. Situated in the town centre and close to the sea front.
Live entertainment every Saturday and Sunday evening, Sunday, Tuesday and Wednesday afternoon Bingo (Friday, Saturday and Sunday). Buffets arranged.
 Large downstairs concert room seating 250. Coach parties welcome including a Saturday.
 Please contact the Secretary giving prior notice of visit. Open all day.

WEYMOUTH WMC

MITCHELL STREET, WEYMOUTH, (Harbour End Of Town)
 Less than 5 minutes from the beach!
 We welcome all CIU affiliated members. Music Friday & Saturday evenings, with Bingo fliers on these nights. Plus the usual club activities.
 Restaurant now open.
 Tel: (01305) 786 392 or (01305) 787254
 www.weymouthworkies.co.uk

WIDCOMBE SOCIAL CLUB

Widcombe Hill, Bath BA2 6AA. Tel: (01225) 425076
 www.widcombesocialclub.co.uk
 Large friendly club, 5 mins walk from city centre. Darts, skittles, snooker, dance floor, lakeside terrace, entertainment. Food including our famous Sunday roasts. Associates warmly welcome. Child friendly. Coaches by appointment. Catering available. Easy access from M4. After a day at Bath Races or a fabulous shopping trip, come and relax at Bath's hidden gem.

Passing through the Cotswolds?

Then why not visit

Wotton Hall Club Ltd.

138 Barnwood Road, Gloucester
 - We welcome all Associate Members -
 Bar, Lounge, Ballroom and Games Room. Dancing every Saturday. Restaurant facilities and basket meals available. 14 days' notice required.
 Telephone: Secretary (01452) 610 025
 9.00 am - 1.00 pm Monday - Friday

WEST MIDLANDS & BIRMINGHAM

Alvechurch SPORTS & SOCIAL Club

The Square, Alvechurch,
 Near Birmingham B48 7LD.
 A friendly welcome to all Associate Members.
 Weekend entertainment and comfortable surroundings, also food available. Close to M42 and M5 in a picturesque part of the countryside.
 Contact: A. Morrison, Secretary on (0121) 445 2121.
 Large parties please notify 14 days in advance.

REMEMBRANCE CLUB LTD.

10 CHESTER ROAD, CASTLE BROMWICH, BIRMINGHAM B36 9DD
 Extends a warm welcome to all Associate Members. Live entertainment every Saturday and Sunday evening. Line Dancing Mondays. Ballroom Dancing Tuesdays. Large comfortable lounge. Games Room. Ample parking. Close to M6/M42 (nr. Spaghetti Junction). Coaches by arrangement. Contact the Secretary. (0121) 747 5256 / 747 2943

Yardley Wood Social Club

118 School Road, Yardley Wood,
 Birmingham B14 4JR.
 Club Tel: (0121) 474 2026 Sec: (0121) 474 3725
 Visit our brand new website:
 http://www.yardleywoodsclub.co.uk/
 Two large TV screens, 6 snooker tables, bingo and weekly entertainment, bowling green. Function rooms available for hire and catering. Large car park at rear of the club. Associate members welcome.

YORKS (N & E) & NORTHEAST

BLAKELAW & DISTRICT SOCIAL CLUB

6 Cragston Way, Newcastle NE5 3SW.
 Friendly club on northern edge of Newcastle. Handy for A1, Racecourse and St James' Park. Coach parties welcome.
 Food can also be arranged.
 Contact Secretary Alan Campbell on (07986) 706354 or blakelawsc@googlemail.com

BEECHWOOD, EASTER SIDE & DISTRICT SOCIAL CLUB

Broadwell Road, Easterside,
 Middlesbrough TS4 3PP.
 (Opposite The James Cook University Hospital)
 Live music every night with bingo, totes and raffles. Large bar with 4 snooker and 2 pool tables, 2 dart boards and all Sky sports channels. Two smoking areas with heated Beach Huts. Coach parties welcome with prior notice to The Secretary. Tel: (01642) 318789. Check the website it's all on there,
www.beadsclub.co.uk

CENTRAL WMC

7 Beaumont Street, Darlington
 Tel: (01325) 464054
 Situated near town centre, five minutes from A1(M). Associate members and coach parties are welcome as are football and racing followers.
 Please give prior notice.
 Live entertainment and catering by private arrangement. Room available for birthdays, engagement parties, wakes and weddings.

King Street Social Club

Phoenix House, 27 King Street,
 North Shields NE30 1BZ.
 Telephone: (0191) 2900473.
 Situated on the main road from North Shields to the coast. Main bingo sessions are Tuesday and Friday evenings and Sunday morning.
 Top class live entertainment every weekend supported by resident band "Soul Machine".
 Coach parties welcome with prior notification to the Secretary David Farrell. Telephone (0191) 2900474.

Middlesbrough RAOB Club (The Buffs)

51 Wilton Street, Southfield Road, Town Centre
 A19-A66 2 minutes. Redcar races, 10 minutes. Middlesbrough FC 5 minutes. Games Room, TV Lounge and Lounge. Live entertainment Saturday and Sunday. Disco Wednesday and Friday. 50/50 Dancing Tuesday and Thursday. A warm welcome to all affiliated members including coach parties with prior notice to the Secretary. Telephone: (01642) 860 511.

New York Club & Institute Limited

22-26 Blossom Street, York YO24 1AJ.
 Tel: (01904) 612 244 newyorkclub@btconnect.com
 Secretary: Frank A. Healy BA HND CMD
 300 yards from station on way to racecourse. Warm and friendly welcome to all Associate Members and guests. A great place to call into before or after your visit to York. Beer garden and 42" screen with Sky TV. Parties and buffet-style catering by prior arrangement.

To advertise contact

**Chris Brewis on
 (0191) 265 0040
 or email:
 cj@powdene.com**

North Biddick Social Club

Bonemill Lane, Fatfield, Washington NE38 8AN. Excellent riverside location. Five minutes from A1(M) with excellent car/coach parking facilities. Games room with 2 snooker tables and 2 pool tables. Restaurant facilities and buffets catered for. Why not call on your way to see football games or cricket games in the area? Coaches welcome by prior arrangement with Secretary Michael Normile on
(0191) 416 0148
 Why not visit our website at
 www.northbiddickclub.co.uk

OSBORNE WMC

Osborne Road, Chester-le-Street,
 County Durham DH3 3DS.
 200 yards from the station and short walk to the Riverside Cricket Ground. Evening car and coach parking facilities. Live entertainment every Saturday night. A great place to call in after your day at the races. Bingo Mondays and Fridays.
Just give us a ring on (0191) 388 8679.

POPPLETON ROAD WMC

132 Poppleton Road, York YO26 4UP
(01904) 793398
 A warm friendly welcome assured to all CIU affiliates and guests. Wide selection of beers available, ideal for the races and close to the city centre. Bingo and raffle Fridays. Live entertainment and bingo, Saturdays and Sundays.

SPITAL RESIDENTS ASSOCIATION

Jubilee Centre, Highcliffe, Spittal,
 Berwick-upon-Tweed TD15 2JL.
 A warm welcome to all. Five minutes from the A1, 30 minutes from Kelso Races, cabaret every Saturday evening. A spectacular evening once every month. Bingo Friday, Sunday and Monday nights. Coach parties welcome.
Ring Treasurer Carol Lynn in advance on (01289) 305 597.

City of York Tramways Employees'

- Club and Institute -
 1 Mill Street (off Piccadilly), York YO1 1PY.
 5 minutes from town centre
 Entertainments Fridays, Saturdays and Sundays. Prize games. Concert room (seating 275), Games Room, Bar and live Sky Sports TV. Visiting Associates are welcome. Parties by arrangement.
Telephone: (01904) 623 953.

HAYES STACKS THEM IN!

Regular advertisers Hayes WMC in West London report terrific ticket sales for their monthly Cabaret Shows - thanks in part to their regular advertisement on Page 2 and the Club Outings section in *Club Journal*.

Club Secretary Bob Daybell says: "We're delighted.

The shows are selling out every month and we are getting a good response from other clubs who see the ad in the *Journal*."

It's proof that advertising on a monthly basis does the business!

Find out how a regular advertisement in *Club Journal* could benefit your club or your company.

CONTACT Mike Lyon on (0191) 4887142



CLASSIFIED ADVERTISING

ALTHOUGH the CIU has taken care to ensure that all advertisements are placed in good faith it accepts no liability for any advertisements in Club Journal. To place an advertisement in Club Journal contact Mike Lyon on (0191) 488 7142 or write to Club Journal, Unit 17, St Peter's Wharf, Newcastle NE6 1TZ. Fax: (0191) 275 2609. email: info@powdene.com

WELSH CUE UP FOR REVENGE

SPEEDCLEAN

THE ULTIMATE WAREWASHING RANGE

and ice makers



Heavy duty DISH & GLASSWASHING MACHINES offering unrivalled standards in speed, efficiency, reliability and durability.

FEATURES INCLUDE:

- built-in water softener
- 45 second wash cycle
- energy-saving insulated panels
- automatic detergent and rinse-aid dispensers

finance options to suit - full guarantee - nationwide service support

NELSON 0800 592 833
WWW.NELSONWASH.COM



Current National Pool Champions John Bourne, Steve Wylie and James Evans of Easington Colliery Club. Last year's runners-up Twyn-Y-Ffald WMC face another team from Co. Durham in this year's final.

Our National Team Pool Final will once again be between teams from the North East and South Wales as last year's runners-up Twyn-Y-Ffald WMC from Monmouthshire take on Belle Vue (Crook) Club from County Durham.

In the semi-finals Twyn-Y-Ffald beat Broadwater WMC, Surrey 5-2 at Ashford Road Club, Swindon on Saturday, May 5; and Belle Vue beat Grove & Moorside Club, Co. Durham 5-4 on Saturday, May 12 at Belmont Club, Durham. The final will be held in the Midlands in the summer.

Twyn-Y-Ffald will be looking to avenge last year's final when they lost 5-0 to another County Durham team, Easington Colliery Club. The whitewash was partially avenged when the club's snooker team beat High Howdon Social Club from Tyneside 4-0.

Details of all games, fixtures and results can be found on the Union's website: www.wmciu.org.

Trent Pottery & Furniture

TRENT POTTERY & FURNITURE

BQ/2 Available in gold, black or silver frame in any fabric C shown below. From **£13.70**

BQ/7 Gold frame in any fabric C shown below. From **£22.70**

BQ/1 Available in gold, black or silver frame in any fabric C shown below. From **£12.90**

BQ/5 Gold or silver frame in any fabric C shown below. From **£22.70**

NEW BROCHURE OUT NOW



Email: sales@pubfurnitureuk.co.uk Web: www.trentpottery.co.uk
Tel: 0116 2864911 Fax: 0116 2869030

SAVE UP TO £2000 A YEAR ON YOUR ENTERTAINMENT
FRED BUTLIN ENTERTAINMENT AGENCY SUPPORTS CIU

CHEAPER VOCALISTS • DUOS • LIVE GROUPS, LOOK ANY PRICES BEATEN!

Ring now everywhere UK covered Tel 0114 3601995 SAVE SAVE SAVE
Mobile 07961 048696 free call back • email fred@fredbutlin.com

SHOWCASES ARRANGED • SAVE ON ENTERTAINMENT WITH FRED
My website www.fredbutlin.com • we do CLUB WEBSITES £79

ALSO RELIEF BONDED STEWARDS/STEWARDESS AVAILABLE LICENCED

Golfing for Heroes



The Golf Society at East Ham WMC in London has raised nearly £6,000 for Help for Heroes in the last two years.

The money was raised with Captain's Days in both 2010 and 2011, charity runs and donations at the club, which is in Boleyn Road, next door to West Ham Football Club. Members are pictured on tour in Portugal.

Style Seating

UK Manufactured Furniture

- Fluted aluminium frame
- Moulded seat foam
- Light weight
- 10 different fabric choices
- 5 different frame colours
- No visible fixings
- FREE DELIVERY**
- UK manufactured
- 5 year structural warranty
- Tested to BS EN 15373:2007 (test Level 3 - Severe Use)

£36.95

£19.95

£39.95

Call for FREE 48 page brochure
tel: 01945 580099 www.styleseating.co.uk

Small Kent social club requires STEWARD/STEWARDESS

with partner to assist, due to existing Steward's retirement, early in 2013. Accommodation provided.
Apply to Secretary in writing with full CV and phone number.
David (Taffy) Watts, Secretary, Palmerston Road Club,
104 Palmerston Road, Chatham ME4 5SJ
Tel 01634 403847 (best time 8-10am)



THE CIU Racing Club uses the bulk buying power of more than 2,000 clubs to obtain special discounts from racecourses. You can make a booking by filling in the form at the foot of this page. To obtain the discount we send all the forms to the racecourse together as one block booking and they will send you the tickets at your club a few days before the meeting. Tickets are sent to the club as otherwise anyone could buy them. We need to receive your booking three weeks before the meeting otherwise we cannot guarantee you will receive the discount because late bookings do not save the courses any work.

To register your club as a member of the CIU Racing Club ring **Jean Garrett** on (0191) 2650040. As well as receiving regular updates and the full list of offers you will receive a free copy of Club Journal. Remember that even if a meeting is not listed here you can obtain a party discount direct from the course. Satellite racing channel RACING UK is offering all CIU clubs a 30 per cent discount. For further information ring 0870 351 8834. A selection of offers are printed here. The full list has been sent to registered Racing Club members and can be also be found on the CIU website. (All offers Tattersalls unless stated otherwise)

Race Discounts

HAYDOCK:	Saturday, 7th July	£12 (normally £22)
MARKET RASEN:	Sunday, 8th July	£14 (normally £16)
NEWBURY:	Saturday 14th July	£16 (normally £20)
ASCOT:	Saturday, 21st July	£20 (normally £26)
RIPON:	Saturday, 21st July	£12 (normally £15)
ASCOT:	Sunday, 22nd July	£12 (normally £18)
REDCAR:	Sunday 22nd July	£11 (normally £15)
ASCOT:	Saturday, 28th July	£12 (normally £18)
CARLISLE:	Sunday, 29th July	£10 (normally £15)
THIRSK:	Saturday, 4th August	£12 (normally £15)
MARKET RASEN:	Sunday, 5th August	£14 (normally £16)
NEWBURY:	Sunday 5th August	£12 (normally £16)
HAYDOCK:	Friday, 10th August (eve)	£11 (normally £20)
ASCOT:	Saturday, 11th August	£12 (normally £18)
HAYDOCK:	Saturday, 11th August	£12 (normally £22)
REDCAR:	Saturday 11th August	£11 (normally £15)
LEICESTER:	Sunday, 12th August	£9 (normally £16)
THIRSK:	Monday, 13th August (eve)	£12 (normally £15)
RIPON:	Saturday, 18th August	£12 (normally £15)
REDCAR:	Saturday 25th August (eve)	£11 (normally £15)
BEVERLEY:	Saturday 1st September	£10 (normally £13)
ASCOT:	Saturday, 8th September	£12 (normally £18)
HAYDOCK:	Saturday, 8th September	£12 (normally £22)
THIRSK:	Saturday, 8th September	£12 (normally £15)
NEWBURY:	Saturday 22nd September	£16 (normally £20)
HAYDOCK:	Saturday, 29th September	£11 (normally £20)
MARKET RASEN:	Saturday, 29th September	£14 (normally £16)
RIPON:	Saturday, 29th September	£12 (normally £15)
ASCOT:	Autumn Meeting featuring CAMRA Beer Festival	
	Friday, 5th October	£7 (normally £13)
ASCOT:	Autumn Meeting featuring CAMRA Beer Festival	
	Saturday, 6th October	£12 (normally £18)
REDCAR:	Saturday 6th October	£11 (normally £15)
YORK:	Saturday, 13th October	£13 (normally £17)
NEWBURY:	Saturday 27th October	£16 (normally £20)
ASCOT:	Saturday, 3rd November	£12 (normally £18)
CARLISLE:	Sunday, 4th November	£10 (normally £15)

SALTBURN RACING BREAKS
THREE-DAY RACING BREAKS - £175
 Wednesday, June 20th - Saturday, June 23rd.
 Racing at Ripon and Redcar.
 Monday, August 27th - Thursday, August 30th
 Racing at Ripon and Catterick (Wednesday Evening)

BUY YOUR OWN COPY. . . and pay less

Here's your chance to have your own personal copy of *Club Journal* for less than you'd pay for it at the club.

Fill in this form to obtain a year's supply of *Club Journal* for £7.50. This means that not only will we send you your copy post-free to your home if you wish, but two of the 12 editions will be yours for FREE.

Please send me a year's supply of *Club Journal*. I enclose a cheque for £7.50 made payable to the Club & Institute Union.

Name: _____

Home Address: _____

Postcode: _____

Please send your order to Club Journal,
 Unit 17, St Peter's Wharf, Newcastle upon Tyne NE6 1TZ.

NORTHERN RACING - A DAY OUT FOR £10

Northern Racing, who operate as Plate Day, Fighting Fifth and Ladies Day at Newcastle; Bath, Brighton, Chepstow, Ffos Las, Fontwell, Great Yarmouth, Hereford, Newcastle, Sedgefield and Uttoxeter Racecourses, are again offering their £10 across-the-board and Ladies Day at Great Yarmouth, August Festival at tickets throughout 2012. The offer applies to all meetings with certain exemptions such as fixtures at Fontwell and Ffos Las.

Fixtures for which the offer applies include:

Mon, Jul 2 (eve):	Bath, Uttoxeter	Fri, Aug 17:
Ffos Las	Mon, Jul 30:	Newcastle
Tues, Jul 3:	Yarmouth	Tues, Aug 21:
Brighton	Mon, Jul 30 (eve):	Yarmouth
Wed, Jul 4 (eve):	Uttoxeter	Thur, Aug 23:
Chepstow	Thur, Aug 2 (eve):	Bath, Ffos Las
Thur, Jul 5:	Ffos Las	Fri, Aug 24 (eve):
Yarmouth	Tues, Aug 7:	Newcastle
Tues, Jul 10 (eve):	Bath	Sun, Aug 26:
Uttoxeter	Wed, Aug 8:	Yarmouth
Wed, Jul 11:	Newcastle	Monday, Aug 27 (BH):
Yarmouth	Wed, Aug 8 (eve):	Chepstow, Newcastle
Tues, Jul 17:	Yarmouth	Thur, Aug 30 (eve):
Ffos Las,	Thur, Aug 9:	Fontwell, Hereford
Wed, Jul 18:	Yarmouth	Mon, Sep 3:
Uttoxeter	Thur, Aug 9 (eve):	Ffos Las
Thur, Jul 19:	Chepstow	Wed, Sep 5:
Brighton	Mon, Aug 13:	Bath, Hereford
Thur, Jul 19 (eve):	Ffos Las	Thur, Sep 6:
Bath	Tues, Aug 14:	Sedgefield
Tues, Jul 24:	Bath	Fri, Sep 7:
Yarmouth	Tues, Aug 14 (eve):	Brighton, Chepstow
Tues, Jul 24 (eve):	Yarmouth	Sun, Sep 9:
Ffos Las	Thur, Aug 16 (eve):	Fontwell
Thur, Jul 26:	Chepstow	

CIU Racing Club Booking Form

Number of tickets required (minimum 6) _____ Price per ticket £ _____

Racecourse _____ Date of meeting: _____

Cheque enclosed for £ _____

(Made payable to racecourse involved).

Club: _____

Club Address: _____

Post code: _____

Contact Name: _____

Daytime telephone No: _____

Please send this booking form plus cheque (made payable to the appropriate racecourse) at least three weeks prior to meeting to:
 Jean Garrett, Club Journal, Unit 17, St. Peter's Wharf,
 Newcastle upon Tyne NE6 1TZ.

BE THE NUMBER ONE VENUE FOR A SUMMER OF SPORT



Watch the football tournament on the big screen – up to 300". Make your venue the winning one with a FREE Epson ceiling bracket, worth up to £111 exc. VAT†, when you buy selected Epson projectors.

EPSON EB-W12



Make your budget go further with the EB-W12 - the high-quality HD Ready projector with a wide range of features and an affordable price tag.

Bright output -
2,800 lumens White and Colour Light Output

3LCD Technology -
for vibrant, high-quality pictures

HD Ready -
for crisp, clear images via HDMI

Sharp detail -
3,000:1 contrast ratio

Easy set-up -
automatic keystone correction for a perfectly straight image

Long term warranty -
three year onsite projector warranty and one year lamp warranty

EPSON EB-915W



This compact projector offers bright projections and widescreen HD Ready entertainment at an affordable price.

Ultra bright -
3,200 lumens White and Colour Light Output

3LCD Technology -
for vibrant, high-quality pictures

HD Ready -
for crisp, clear images via HDMI

Widescreen content -
high-quality WXGA picture

Easy to set up -
automatically searches for picture

Long term warranty -
three year onsite projector warranty and one year lamp warranty

EPSON EB-D6155W



Enjoy high-quality, trouble-free, projections in tough environments thanks to Epson's advanced dust-proof technologies.

Super bright -
3,500 lumens White and Colour Light Output

Advanced protection -
automatic exhaust shutter system and glass encased optical engine

3LCD Technology -
for vibrant, high-quality pictures

HD Ready -
for crisp, clear images via HDMI

Low maintenance -
10,000 hour filter life

Multiple inputs -
video, PC and audio connectivity

Long term warranty -
three year onsite projector warranty and one year lamp warranty



PLEASE VISIT WWW.EPSON.CO.UK/GAMES FOR MORE DETAILS

Terms and conditions apply, please visit www.epson.co.uk/games for more details

EPSON[®]
EXCEED YOUR VISION